



WEST VIRGINIA DEPARTMENT OF TRANSPORTATION

Division of Highways

1900 Kanawha Boulevard East • Building Five • Room 110
Charleston, West Virginia 25305-0430 • (304) 558-3505

Earl Ray Tomblin
Governor

Paul A. Mattox, Jr., P. E.
Secretary of Transportation/
Commissioner of Highways

July 10, 2015

Ms. Susan Pierce, Deputy State
Historic Preservation Officer
Division of Culture and History
1900 Kanawha Boulevard, East
Charleston, West Virginia 25305

Dear Ms. Pierce:

State Project: S333-28-1.15
Federal Project: N/A
FR# 14-198-MN
Ward Dawson Bridge & Culvert
Morgan County

Attached, in accordance with the Memorandum of Agreement (MOA) Stipulations I and II is the State Level Historic Documentation for Ward Dawson Bridge and nearby culvert. Also attached is a CD-ROM of the documentation. Also enclosed, in accordance with MOA Stipulation III, is the brochure for Ward Dawson Bridge for SHPO review. Upon concurrence, 150 color brochures will be distributed to Morgan County Schools (50 brochures), Morgan County Historical and Genealogical Society (25), Morgan County Public Library (50), and Paw Paw Public Library (25). As well, each recipient will receive a CD-ROM of the brochure for the organization's own reproduction use.

MOA Stipulation IV has been completed. West Virginia Department of Highways delivered the Ward Dawson Bridge plaques to Morgan County Historical and Genealogical Society on June 24, 2015.

A copy of the signed MOA (highlighting the stipulations addressed) is also included with this submittal. Thank you for your assistance in the progress of this project. Should you have any questions, please do not hesitate to contact Tracy Bakic of our Environmental Section at (304) 558-9676.

Very truly yours,

Ben L. Hark
Section Head
Environmental Section
Engineering Division

BH:k

Attachments

bcc: DDE(TDB)

**MEMORANDUM OF AGREEMENT
BY AND AMONG
THE WEST VIRGINIA STATE HISTORIC PRESERVATION OFFICER AND THE
WEST VIRGINIA DIVISION OF HIGHWAYS**

**REGARDING IMPLEMENTATION OF THE
WARD DAWSON BRIDGE REPLACEMENT PROJECT
STATE PROJECT # S333-28-1.15
MORGAN COUNTY, WEST VIRGINIA
JUNE 2014**

WHEREAS, the West Virginia Division of Highways (WVDOH) proposes to replace the Ward Dawson Bridge which spans over Sleepy Creek and the nearby box culvert which spans over a millrace related to Sleepy Creek, both on Oakland Road (County Route 28) in Morgan County, hereinafter referred to as the "Project."

WHEREAS, the WVDOH has determined that the Project will have an adverse effect upon the Ward M. Dawson, Sr. Farm Historic District, a property eligible for listing on the National Register of Historic Places (NRHP) and of which the Ward Dawson Bridge and the nearby culvert are contributing elements of; and

WHEREAS, the WVDOH has consulted with the West Virginia State Historic Preservation Officer (WVSHPO) pursuant to West Virginia Code Chapter 29, Article 1 and its implementing regulations (82 CSR 2), as well as 36 CFR Part 800.5 Implementing Section 106 of the National Historic Preservation Act; (16 U.S.C., 470f); and

WHEREAS, the WVDOH has contacted the Preservation Alliance of West Virginia and the Morgan County Historical and Genealogical Society; and

WHEREAS, the WVDOH has determined that the Project will not affect archaeological properties; and

NOW, THEREFORE, the WVSHPO and the WVDOH agree that the undertaking will be implemented in accordance with the following stipulations in order to take into account the effects of the undertaking on historic properties.

STIPULATIONS

The WVDOH shall ensure that the following stipulations are carried out:

Ward Dawson Bridge and Nearby Culvert

- I. The Ward Dawson Bridge and nearby culvert will be documented in their present historic setting. The documentation packages will include 5"x7" black and white digital prints in accordance with the Interim National Register of Historic Places and National Historic Landmarks Survey Photo Policy Expansion of May 2013.

- II. A brief history of the structures will be included in the aforementioned documentation package, along with fully completed West Virginia Historic Property Inventory (HPI) forms and copies of plan sheets and/or drawings of the bridges from WVDOH bridge files if they are available. The documentation packages will be distributed to WVSHPO: Morgan County Schools; Morgan County Historical and Genealogical Society (MCHGS); Morgan County Public Library; and Paw Paw Public Library.
- III. 150 color brochures about the Ward Dawson Bridge and nearby culvert will be developed by the WVDOH. The WVSHPO will be given the opportunity to review and comment. The brochures will be distributed to the following recipients, each of which was consulted to determine the number of brochure copies that WVDOH will provide: Morgan County Schools (50 brochure copies); MCHGS (25 brochure copies), Morgan County Public Library (50 brochure copies) and Paw Paw Public Library (25 brochure copies). As well, each recipient will receive a CD format digital copy of the brochure for the organization's own reproduction use once the original hard copies provided by WVDOH have been depleted.
- IV. The Ward Dawson Bridge's two bridge plaques will be removed and given to the Morgan County Historical and Genealogical Society per that organization's request.
- V. The Ward Dawson Bridge and nearby culvert will be featured on a future website listing historic bridges.

VI. Duration

This Memorandum of Agreement (MOA) will expire if its stipulations are not carried out within five (5) years from the date of its execution. At such time, and prior to work continuing on the undertaking, the WVDOH shall execute a MOA pursuant to 82 CSR 2.5.4.d. Prior to such time, WVDOH may consult with other signatories to reconsider the terms of the MOA and amend it in accordance. WVDOH shall notify the signatories as to the course of action it will pursue.

VII. Post-Review Discoveries

If any unanticipated discoveries of historic properties or archaeological sites, including human burial sites and/or skeletal remains, are encountered during the implementation of this undertaking, work shall be suspended in the area of the discovery until the WVDOH has developed and implemented an appropriate treatment plan in consultation with the WVSHPO pursuant to 800.13 (b).

VIII. Monitoring and Reporting

Each year following the execution of this MOA until it expires or is terminated, WVDOH shall provide all parties to this MOA a summary report detailing work carried out pursuant to its terms. Such report shall include any scheduling changes proposed,

any problems encountered, and any disputes and objections received in WVDOT's efforts to carry out the terms of this MOA.

IX. Amendments

This MOA may be amended when such an amendment is agreed to in writing by all signatories. The amendment will be effective on the date a copy signed by all of the signatories is filed with the SHPO.

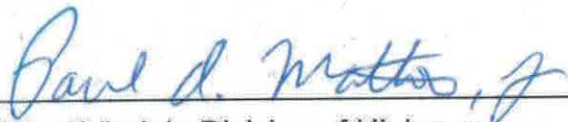
X. Termination

If any signatory to this MOA determines that its terms will not or cannot be carried out, that party shall immediately consult with the other parties to attempt to develop an amendment per Stipulation VIII, above. If within thirty (30) days (or another time period agreed to by all signatories) an amendment cannot be reached, any signatory may terminate the MOA upon written notification to the other signatories. Once the MOA is terminated, and prior to work continuing on the undertaking, WVDOT must execute a MOA pursuant to 82 CSR 2.5.4.d.

XI. Dispute Resolution

Should the WVSHPO object to any actions proposed pursuant to this agreement within thirty (30) days of such action, the WVDOT will consult with the WVSHPO to resolve the objection. If the WVDOT determines that the objection cannot be resolved, the WVDOT will request the further comments of the WVSHPO. Any WVSHPO comment provided in response to such a request will be taken into account by the WVDOT with reference only to the subject of the dispute; the WVDOT's responsibility to carry out all actions under this agreement that are not the subjects of the dispute will remain unchanged.

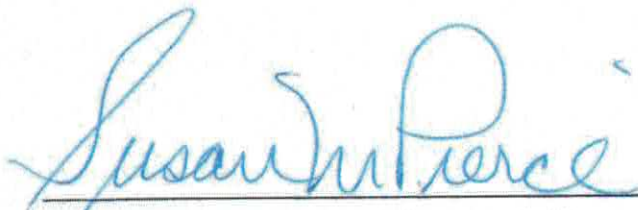
EXECUTION of the Memorandum of Agreement by the WVSHPO and the WVDOH and implementation of its terms, evidence that the WVDOH has afforded the WVSHPO an opportunity to comment on the Ward Dawson Bridge Replacement Project and its effects on historic properties, and that the WVDOH has taken into account the effects of the undertaking on the historic properties.



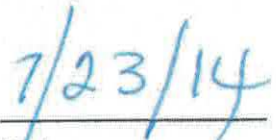
West Virginia Division of Highways



Date



West Virginia Deputy State Historic Preservation Officer



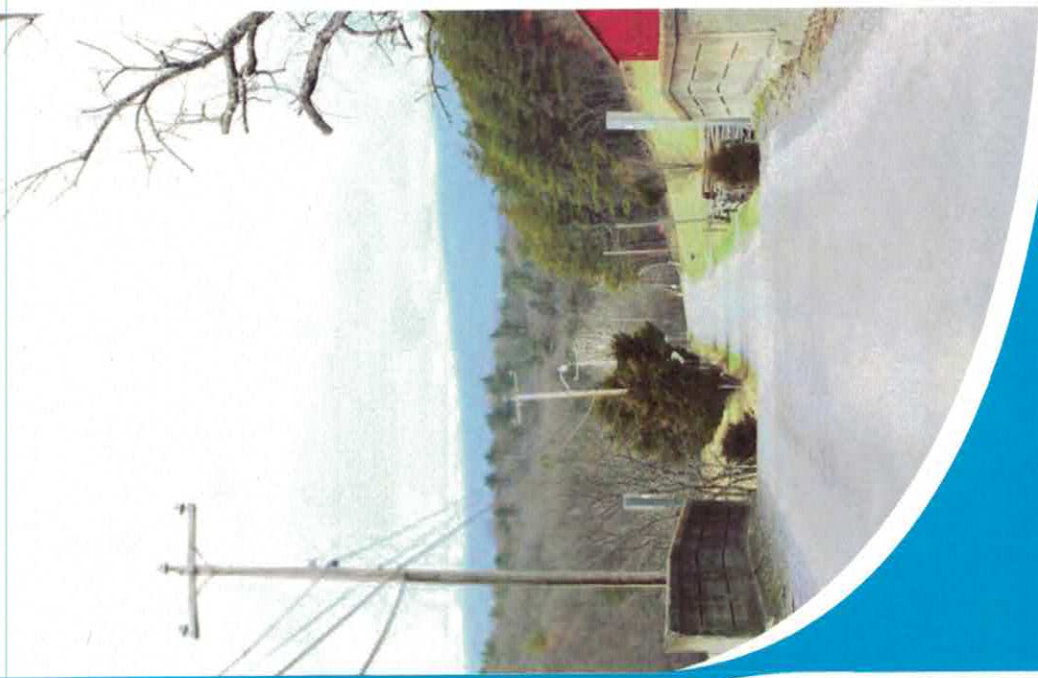
Date

whatHistoricalServicesUnitdoes

- Research and Write Hist rts
- Determine National Register Eligibility
- Determine Historic Boundaries
- Determine Effects to Historic Properties
- Mitigate Adverse Effects to Historic Properties
- Complete Historic Documentations for Specific Historic Properties
- Historic Turnpike Research and Analysis
- Coordinate with Federal, State, and Local Resource Agencies
- Conduct Public Workshops for Specific Bridge and Highway Projects

contactus

Division of Highways
Engineering Division
Environmental Section
1334 Smith Street
Charleston, WV 25301
Sondra Mullins
Historical Services Unit Leader
304.558.9487
sondra.l.mullins@wv.gov

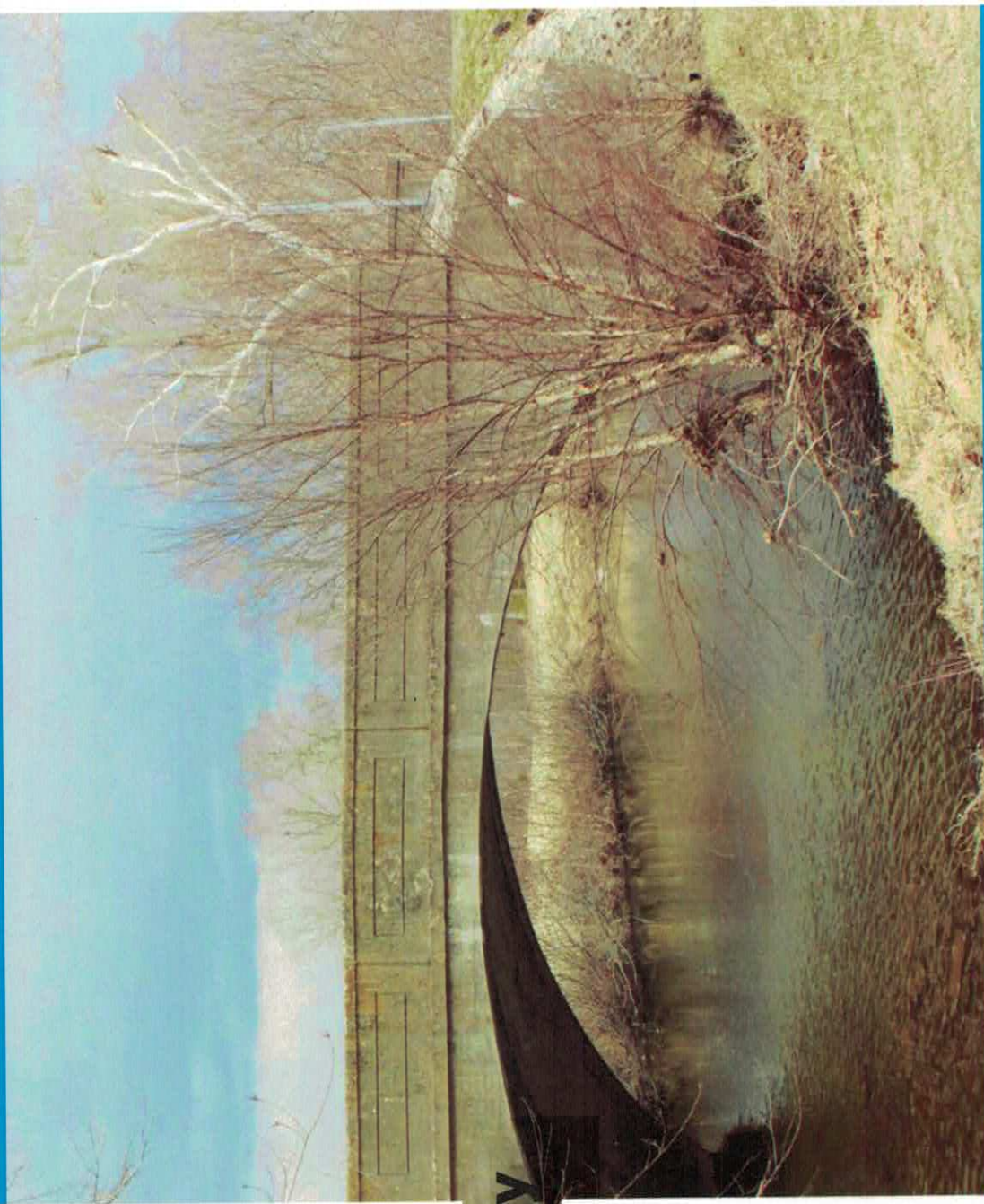


ward dawson
bridge
morgan county

The Ward Dawson Bridge was built in 1920 by contractor H. F. Ringeling. The structure was a single-span concrete arch deck bridge that included parapet railings (with incised rectangular decoration) and abutments with wing walls. The overall measurements of the bridge were 43'-9" long by 18'-3" wide. The width between railings was 16'-8". This span was one of numerous concrete arch bridges consistently built in West Virginia between 1918 and 1940. The contractor for this bridge was H. F. Ringeling. Ringeling was an engineer, serving as an inspector with Maryland State Road Commission prior to military duty in WWI. After the war, he lived in Baltimore until at least 1920, after which he moved southward working on engineering projects in Alabama, Georgia and Florida.

Ward Dawson History

The Ward Dawson Bridge was determined eligible for the National Register of Historic Places as a contributing element of the Ward M. Dawson, Sr. Farm. The farm was operated by Dawson from ca. 1915 until 1955 and included a grist mill and a cannery. Other elements of the farm are Dawson's home, the mill building, mill race with associated culvert, and a barn. The farm is historically significant for its association with early commercial agriculture in Morgan County and for Ward Dawson, Sr.'s noteworthy involvement in local business and politics. Dawson also had a successful hardware store in Berkeley Springs and served several terms as a county commissioner and as a county representative in the WV House of Delegates. He was a member of several local educational, social and professional organizations as well. The Ward Dawson Bridge was demolished in 2015.



Location: County Route 28, 1.2 miles east of US 522, spanning Sleepy Creek
Type: Single-Span Concrete Arch
Length: 43 feet 9 inches
Year constructed: 1920
Contractor: H.F. Ringeling

State Level Historic Documentation Report

State Project: S333-28-1.15

Federal Project: N/A

WARD DAWSON BRIDGE & CULVERT Morgan County



Prepared by:

Tracy D. Bakic, Structural Historian

Department of Transportation
Division of Highways
Engineering Division
Environmental Section

July 10, 2015

STATE LEVEL HISTORIC DOCUMENTATION
WARD DAWSON BRIDGE & CULVERT

Location: County Route 28 (Oakland Road), over Sleepy Creek
Berkeley Springs vicinity
Morgan County
West Virginia

USGS Ridge Quadrangle

Date of Construction: 1920

Builder: H. F. Ringeling

Present Owner: West Virginia Department of Transportation
Division of Highways
1900 Kanawha Boulevard, Building 5, Room A-110
Charleston, WV 25305

Present Use: Vehicular Bridge and Culvert

Significance: The Ward Dawson Bridge and nearby culvert were contributing elements of the Ward M. Dawson, Sr. Farm which is historically significant for its association with early commercial agriculture in Morgan County and for Ward M. Dawson, Sr.'s noteworthy involvement in local business and politics.

Project Information: The project has been undertaken due to the deteriorating condition of the bridge and the necessity for structures that accommodate two lanes of traffic. Any future deterioration of the bridge and culvert would have resulted in their closure. Therefore, the this bridge and culvert warranted replacement. This documentation was undertaken in June 2015 in accordance with a Memorandum of Agreement among the West Virginia Department of Transportation and West Virginia State Historic Preservation Office. These measures are required due to the replacements of these National Register eligible structures.

Tracy D. Bakic, Structural Historian
West Virginia Division of Highways
Charleston, WV 25305
July 10, 2015

The Ward Dawson Bridge spanned Sleepy Creek and was located in southern Morgan County, West Virginia on County Route (CO) 28, approximately 1.2 miles east of the COO 28 intersection with US Route 522. CO 28 is also known as Oakland Road. Sleepy Creek is a tributary of the Potomac River to the north. The average daily traffic (ADT) over the bridge in 2011 was 500 vehicles per day.



Ward Dawson Bridge was built in 1920 by contractor H. F. Ringeling. It appears to have been part of realignment of a section of CO 28 at that time (WV SRC Aug & Sept. 1920). The structure was a single-span concrete arch deck bridge that included parapet railings (with incised rectangular decoration) and abutments with wing walls. The overall measurements of the single-lane bridge was 43 feet, nine inches long by 18 feet, three inches wide. The width between railings was 16 feet, eight inches. This span was one of numerous concrete arch bridges consistently built in West Virginia between 1918 and 1940. The contractor for the bridge was H. F. Ringeling. Ringeling was an engineer, serving as an inspector with Maryland State Road Commission prior to military duty in World War I. After the war he lived in Baltimore until at least 1920 and then moved southward working on engineering projects in states such as Alabama, Georgia and Florida.

A May 2013 bridge inspection reported that the overall structure of Ward Dawson Bridge was in fair condition. The most significant deficiencies included: collision damage on the parapet railings; heavy concrete deterioration at the corners of springing lines and abutments, including wingwalls and footings; and a hairline crack (from springing line to springing line) at the center of the arch barrel.

A single-lane concrete box culvert was located about 200 west of Ward Dawson Bridge and spanned CO 28 over a mill race fed by Sleepy Creek. It included concrete railings, wing walls and chamfered edgings, and its overall measurements were seven feet, two inches long by 18 feet, nine inches wide. The width between railings was 17 feet, five inches. This ca. 1920 structure was likely built by state or county forces and is an example of



standard small box culvert design used in WV road construction by the 1910s. This culvert replaced an earlier wooden mill race span.

Agriculture in the Morgan County was at its height in the early part of the 20th century. Farmed products noted in the county at this time were corn, wheat, oats, rye, buckwheat, hay, tomatoes, potatoes, apples, peaches, sheep and poultry. It was an important canning center, there being 25 canneries by 1916 that were mostly working on tomatoes.

Ward Dawson Bridge and the culvert were located within a built-up section of the former Ward M. Dawson, Sr. Farm. This farm was at one time part of a village known as Phoenixville that included its own general store and post office. Ward McKinley Dawson, Sr. was born in Phoenixville on September 2, 1892, the youngest of the five children of Randolph and Emma Dawson. Ward married Lola Odessa Beeler in 1913 and the couple proceeded to raise seven children on the subject farm, initially living in a three-story residence built by Ward's grandfather. In 1930 the old family house was razed and the existing Bungalow-style house was built in the same location. This house and the farm were later owned by Ward's daughter Evelyn and her husband. Ward Sr. passed away in 1974.



Ward M. Dawson, Sr. operated a mill and cannery plant on his property. The mill functioned from around 1915 until 1955. "All types of animal feeds were ground and mixed at this water powered flour milling operation. There was also a completed line of stone burr-ground pancake flour marketed by the brand name of 'G-WHIZ-Ward M. Dawson & Sons'; and 'DAWSON'S SPECIAL - Phoenixville Mills.' Though no longer standing, there was also a canning factory on the farm which processed and marketed tomatoes, peaches, and green beans by the brand name 'DAWSON'S FAVORITE', [from 1934] until it closed in 1946" (Hudson 1996). The farm structures that still exist on the property include the mill building, mill race, barn, and smokehouse. Ward Dawson Bridge and the mill race culvert were in the midst of the extant build-up.

Ward Sr. was founder of Dawson's Hardware & Equipment Company, starting as a John Deere Farm Equipment dealer in 1927 at the W. In 1934 his business was moved to Berkeley Springs and expanded to include hardware, appliances, plumbing, heating, air conditioning. He was a prominent Republican politician, serving six terms for Morgan County in the WV House of Delegates during the period from 1947 to 1960. He represented Timber Ridge Magisterial District on the Morgan County Court/Commission for 12 years, being elected president several times. He also was a member of: Morgan County Board of Education, Berkeley Springs Junior Order of United American Mechanics, Lions Club, Small Business Administration, Farm Bureau, WV Merchants Association, and the Hardware Association of the Virginias. He and his wife were members of Union Chapel United Methodist Church, where Ward acted as Sunday school superintendent for 25 years.

Ward Dawson Bridge and the nearby culvert were determined eligible for listing in the National Register of Historic Places as contributing elements of the Ward M. Dawson, Sr. Farm which is historically significant for its association with early commercial agriculture in Morgan County and for Dawson's noteworthy involvement in local business and politics.

The Ward Dawson Bridge and nearby culvert were removed in May 2015 for the construction of a new bridge and culvert in the same locations.

BIBLIOGRAPHY

Grimsley, George Perry. West Virginia Geological Survey – Jefferson, Berkeley, and Morgan Counties. Wheeling, WV: Wheeling News Litho. Co., 1916.

Hudson, Karen/Wilbur Smith Associates. West Virginia Historic Property Inventory (HPI) Form – Ward M. Dawson, Sr. Farm (MN-0011-0147). March 1996. Part of Historic Resources Survey

– US Route 522 Improvement Corridor (Wilbur Smith Associates, 1997). On file, WV State Historic Preservation Office, Charleston.

Mozier, Jeanne. "Morgan County." E-WV - The West Virginia Encyclopedia. Last revised June 2013. <http://www.wvencyclopedia.org/articles/2044>, October 2013.

Pierce, Susan M., WV State Historic Preservation Officer. Letter to Mr. Joe Deneault, State Highway Engineer, Division of Highways, Charleston, WV. February, 5, 1998. Comment/Concurrence letter related to resourced evaluated for the revised Historic Structures Survey – U.S. 522 Improvement Corridor by Wilbur Smith Associates.

---. Letter to Ben Hark, WVDOH Environmental Section Head, Engineering Division, Building 5, Capitol Complex, Charleston, West Virginia. May 20, 2014. Concurrence that the Ward M. Dawson, Sr. Farm, including Ward Dawson Bridge and nearby culvert, is eligible to the National Register of Historic Places.

USGS. Ridge 7.5-Minute Series Topographic Quadrangle Map. 1965, Photorevised 1986.

West Virginia Division of Highways (WVDOH). Bridge Files, Maintenance Division, Building 5, Capitol Complex, Charleston, West Virginia, April 2015.

---. Bridge Inspection Report, Engineering Division, Building 5, Capital Complex, Charleston, West Virginia, November 1993.

---. Bridge Inspection Report, Engineering Division, Building 5, Capital Complex, Charleston, West Virginia, May 2013

West Virginia Division of Highways (WVDOH). Historic Resources Management Report, Ward Dawson Bridge Replacement, State Proj. S333-28-1.15, Completed by Tracy Bakic, Engineering Division, Building 5, Capitol Complex, Charleston, West Virginia, November 2013.

---. West Virginia Historic Property Inventory Form Continuation Sheet – Ward M. Dawson, Sr. Farm. Completed by Tracy Bakic, Engineering Division, Building 5, Capitol Complex, Charleston, West Virginia, April 4, 2014. Appended to March 1996 HPI Form completed by Karen Hudson/Wilbur Smith Associates.

West Virginia State Road Commission. Plan and Profile of Bridge Site over Sleepy Creek near Phoenixville, Morgan County, W. VA., August 1920. On file, WVDOH, Charleston, WV.

---. Reinforced Concrete Arch, Ward Dawson Bridge on Oakland Class “B” Road over Sleepy Creek near Phoenixville, Morgan Co., W. VA., September 1920. On file, WVDOH, Charleston, WV.

White, I. C. Map of West Virginia Showing Railroads and County Products. Morgantown, WV: West Virginia Geological Survey, 1905.

STATE LEVEL HISTORIC DOCUMENTATION
INDEX TO PHOTOGRAPHS

Ward Dawson Bridge & Culvert

County Route 28 (Oakland Road), over Sleepy Creek

Berkeley Springs Vicinity, Morgan County, West Virginia

Photographer(s): Tracy D. Bakic

October 11, 2013

WARD DAWSON -1	Overview showing Culvert (middle) & Bridge (distance); View Northwest
WARD DAWSON -2	Bridge - East Approach, with Dawson Barn in distance; View West/NW
WARD DAWSON -3	Bridge - West Approach, with Dawson Mill in distance; View East/SE
WARD DAWSON -4	Bridge, Showing North Elevation; View Southwest
WARD DAWSON -5	Bridge - Showing South Elevation; View Northeast
WARD DAWSON -6	Bridge - South Elevation; View North
WARD DAWSON -7	Bridge - Railing/Parapet at North Side, Highlighting Typ. Peaked Central Panel of Railing with Incised Rectangular Motif; View North/Northeast
WARD DAWSON -8	Bridge – Typical Railing Pilaster at Northwest Wingwall; View Northeast
WARD DAWSON -9	Bridge – Inset Metal Plaque at Northeast Wingwall that reads “H. F. RINGELING / CONTRACTOR;” View Northwest
WARD DAWSON -10	Inset Metal Plaque at SW Wingwall; reads “MORGAN COUNTY W. VA. / 1920 / COUNTY COMMISSIONERS / B. E. DAWSON, PRES. / F. E. RICE / M. S. HARMISON, CLERK / F. L. HAWKINS, ENG.” View Southeast
WARD DAWSON -11	Culvert with Dawson Mill and House in background; View Northeast
WARD DAWSON -12	Culvert – East Side Approach; View West/Northwest
WARD DAWSON -13	Culvert – North Elevation; View South
WARD DAWSON -14	Culvert – South Elevation; View North

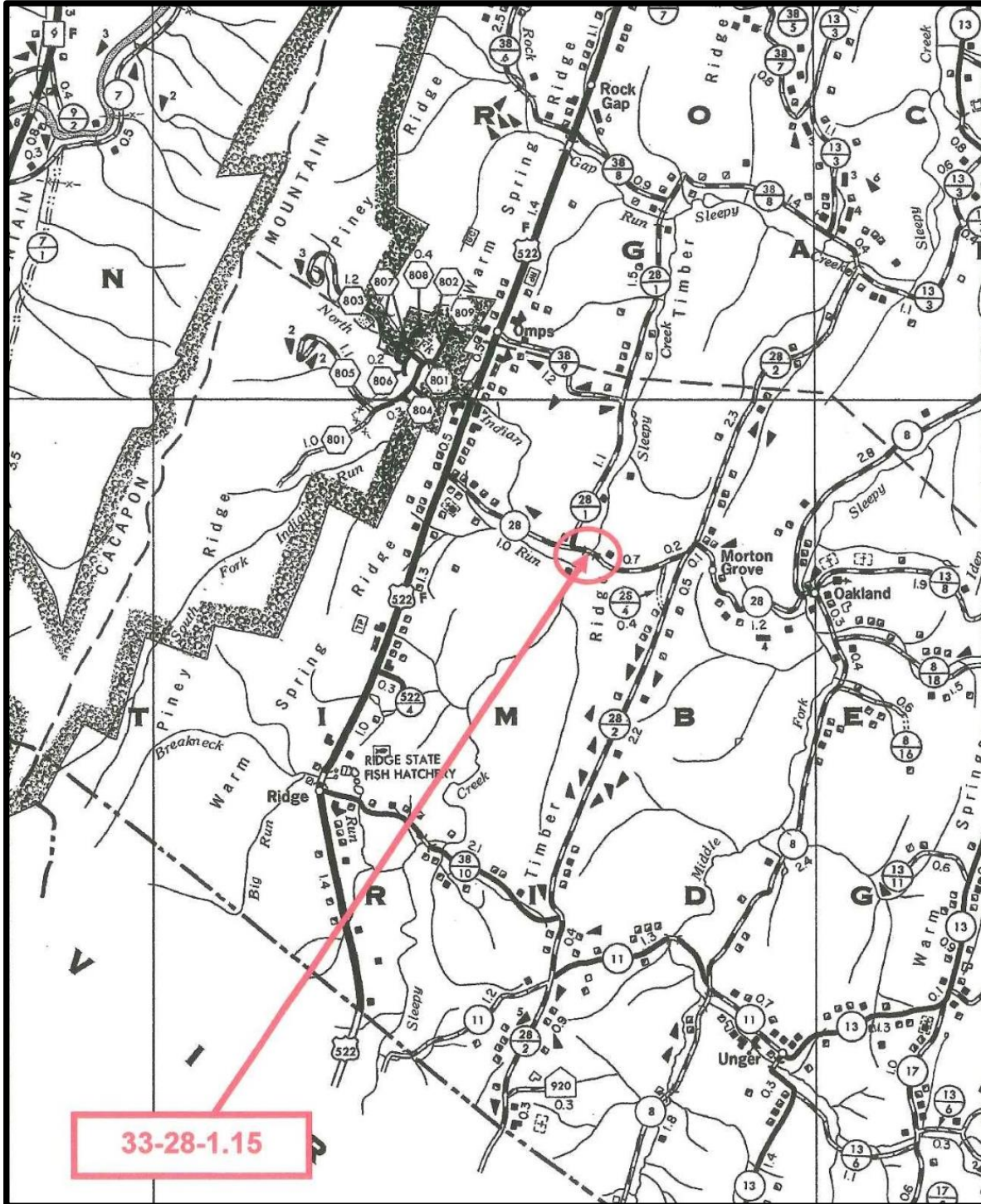
Original bridge plans exist for this bridge and are attached with this documentation.

LOCATION MAP

WARD DAWSON BRIDGE PROJECTS

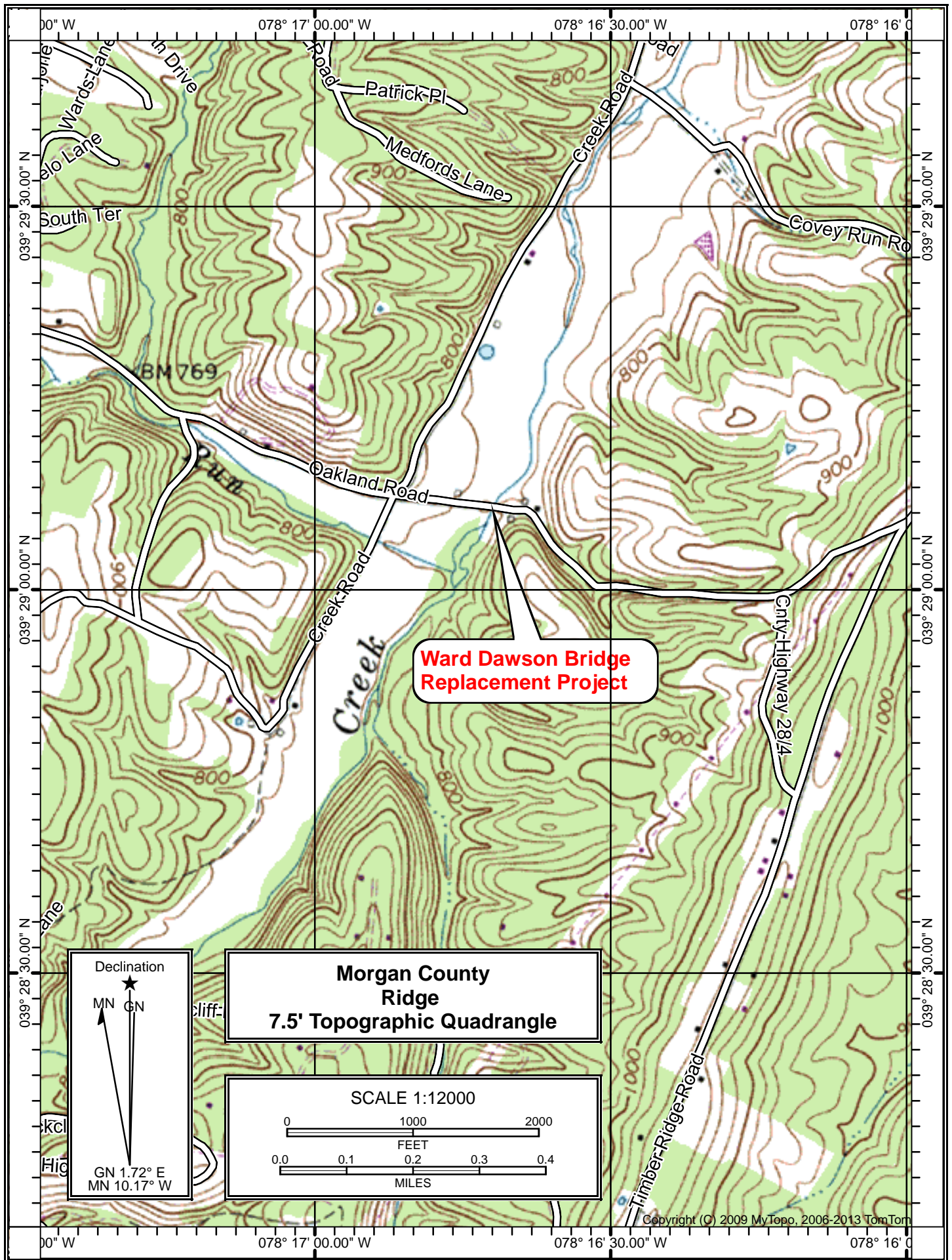
STATE PROJECT NO. S333-28-1.15

MORGAN COUNTY



WEST VIRGINIA DEPARTMENT OF TRANSPORTATION

DIVISION OF HIGHWAYS





1. Overview showing Culvert (middle) and Bridge (distance); View NW



2. Bridge - East Approach, with Dawson Barn in distance; View W/NW



3. Bridge - West Approach, with Dawson Mill in distance (left); View E/SE



4. Bridge, Showing North Elevation; View Southwest



5. Bridge - Showing South Elevation; View Northeast



6. Bridge - South Elevation; View North



7. Bridge - Railing/Parapet at North Side, Highlighting Typ. Peaked Central Panel of Railing with Incised Rectangular Motif; View North/NE



8. Bridge – Typical Railing Pilaster at Northwest Wingwall; View NE



9. Bridge – Inset Metal Plaque at Northeast Wingwall that reads “H. F. RINGELING / CONTRACTOR;” View Northwest



10. Inset Metal Plaque at SW Wingwall; reads “MORGAN COUNTY W. VA. / 1920 / COUNTY COMMISSIONERS / B. E. DAWSON, PRES. / F. E. RICE / M. S. HARMISON, CLERK / F. L. HAWKINS, ENG;” View SE.



11. Culvert with Dawson Mill and House in background; View NE



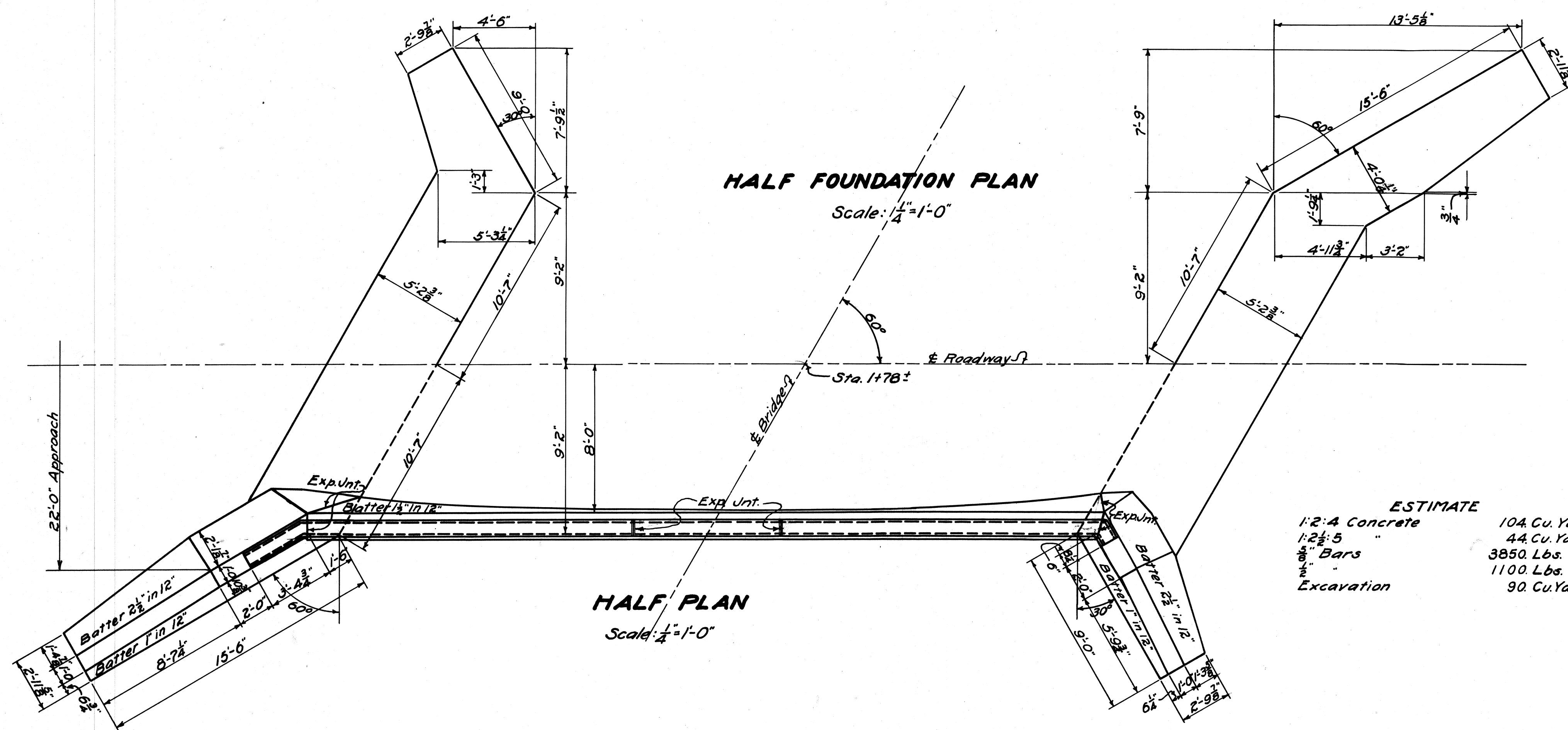
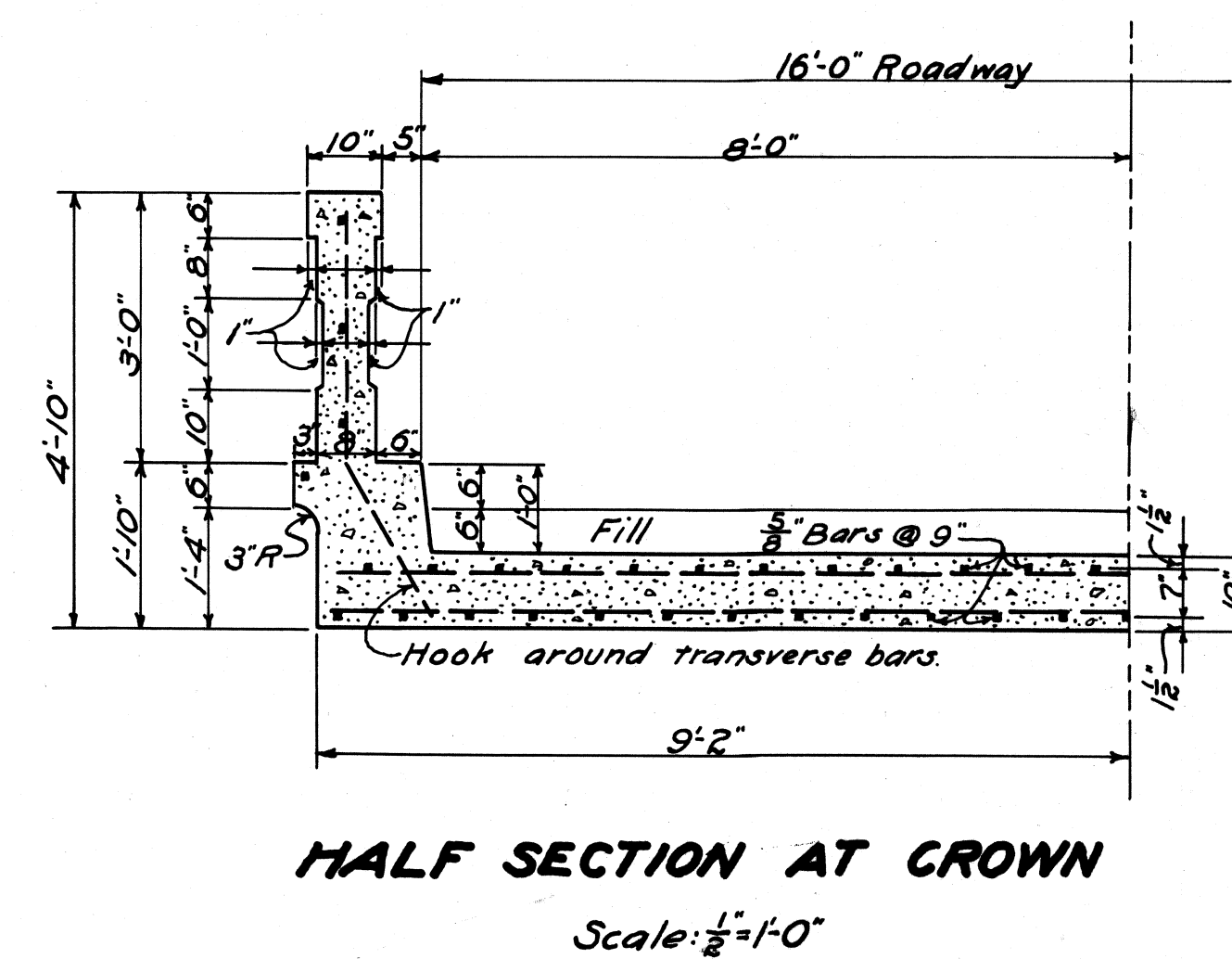
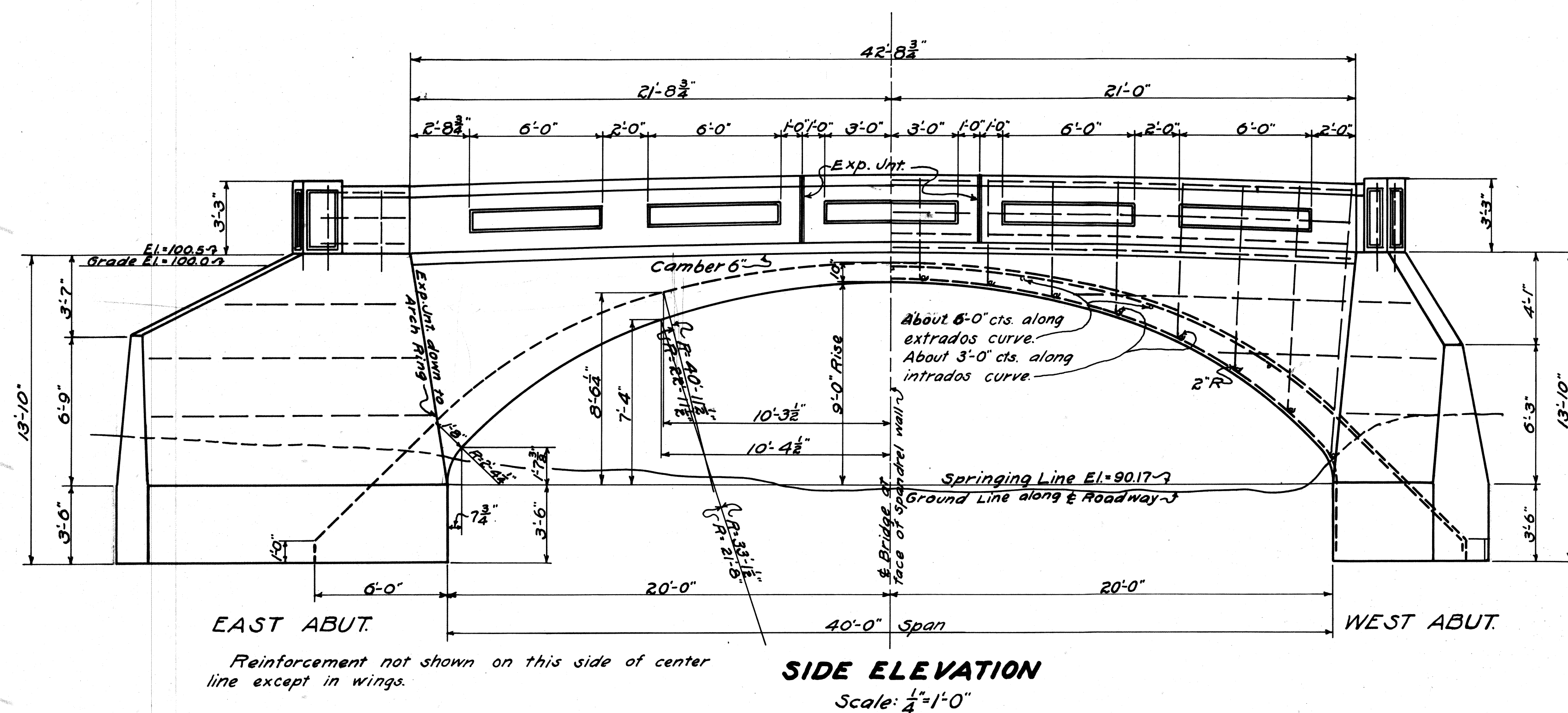
12. Culvert – East Side Approach; View West/Northwest



13. Culvert – North Elevation; View South



14. Culvert – South Elevation; View North



ESTIMATE	
1:2:4 Concrete	104 Cu. Yds.
1:2:5 "	44 Cu. Yds.
5" Bars	3850 Lbs.
" "	1100 Lbs.
Excavation	90 Cu. Yds.

NOTES

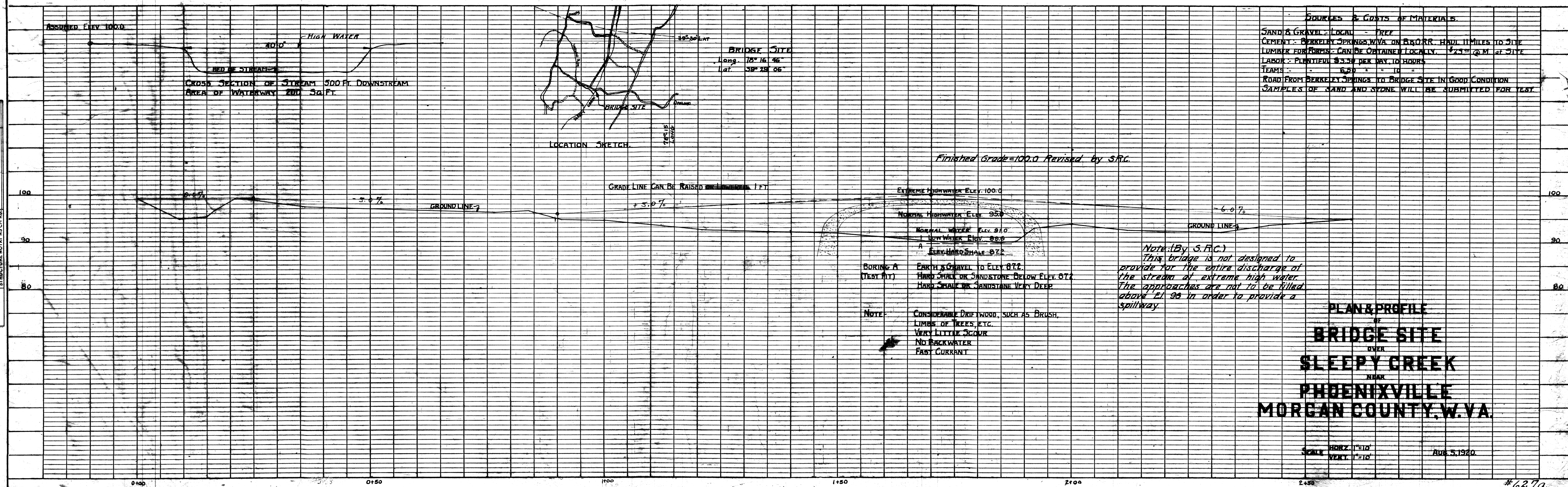
Concrete above springing line to be 1:2:4; below 1:2:5.
All bars to be square twisted and $\frac{5}{8}"$ unless otherwise noted.
Pass no bars through expansion joints.
Place horizontal bars in spandrel and wing walls near outside face.
Place vertical bars in spandrel walls near inside face.
Bevel exposed edges and expansion joints in railing.
Place two 4" drains in each wing wall near ground line.
Foundations to be extended into solid rock satisfactory to the engineer.
Unit bid requested on items shown in estimate.
Specifications by State Road Commission, July 1920.
See notes on Plan & Profile #627a.

**REINFORCED CONCRETE ARCH
WARD DAWSON BRIDGE**
Span 40'-0", Skew 30°, Roadway 16'-0"
on
OAKLAND CLASS "B" ROAD
over
SLEEPY CREEK
near Phoenixville
MORGAN CO., W.VA.
Designed by
STATE ROAD COMMISSION, CHARLESTON, W. VA.
Scale: As shown, Date: Sept 1920

#627

6EM.

PROFILE	BY	DATE	SURVEYED
			PLOTTED
NOTE BOOK			GRADES CHECKED
NO.			B. M.'S. NOTED
			STRUCTURE MOTIVATING CHILD





CE

West Virginia Historic Property Inventory Form

MIN-0011-0147

STREET ADDRESS <i>On Oakland Road, 1.3 miles east of US 522</i>		COMMON/HISTORIC NAME <i>Ward M. Dawson, Sr. Farm</i>	NO. IN SURVEY <i>147</i>	NO. OF BAYS <div>3</div> <div>2</div> <div>FRONT</div> <div>SIDE</div>
TOWN OR COMMUNITY		COUNTY <i>Morgan</i>	NEGATIVE NO. <i>DR 1/18-21</i>	NOT VISIBLE FROM ROAD <input type="checkbox"/>
ARCHITECT/ BUILDER		DATE OF CONSTRUCTION <i>c. 1915</i>	EXTERIOR BUILDING FABRIC <i>weatherboard</i>	
NAT. REGISTER LISTED _____ DATE _____ STATE REGISTER LISTED _____		ROOFING MATERIAL <i>sheet metal</i>	STYLE (STAFF USE ONLY) <i>BUNGALOW</i>	
PROPERTY USE OR FUNCTION <i>mill</i>		TYPE OF FOUNDATION <i>concrete</i>	PHOTOGRAPH (2"x3" CONTACT)	
SURVEY ORGANIZATION AND DATE <i>Wilbur Smith Associates</i> <i>465 East High Street, Suite 100</i> <i>Lexington, KY 40507</i> <i>(606)254-5759/ FAX (606) 254-5764</i> <i>March 1996</i>		QUADRANGLE NAME <i>Ridge</i> PART OF WHAT SURVEY <i>US Route 522</i>		

Bungon Lot/Cemetery B is located nearby, but predates house + mill.

606 6127

SITE NO.

PRESENT OWNERS

OWNER ADDRESS

GENERAL CONDITION OF PROPERTY

Good

ADDITIONS

IF YES, DESCRIBE

☐

YES

☒

NO

ALTERATIONS

IF YES, DESCRIBE

☐

YES

☒

NO

NO. AND NATURE OF OUTBUILDINGS

(A) This brick American Bungalow with wing has a gable-dormer and knee braces. All of the gable ends are covered with wood shingles. The inset porch is supported by brick piers and balustrade. The top pane of the 3/1 windows are vertically divided. Most of the windows appear in twos or threes. The structure has a stone foundation and brick corbeled chimneys. (B) This small frame outbuilding has diagonal sheathing covered with composition siding that has been partially removed. (C) Gable-oriented brick smokehouse. (F) This is the previous location of the Dawson Tomato Cannery.

DESCRIPTION OF PROPERTY (ORIGINAL AND PRESENT)

D) This three-story frame mill has an unusual arched roof. A projecting facade bay has a gable roof. The mill race is located under the left end. The structure is covered with weatherboards and has 4/4 windows as well as 4-light fixed windows. There are numerous board-and-batten doors.

HISTORICAL/CULTURAL SIGNIFICANCE

BIBLIOGRAPHICAL REFERENCES

Morgan County Historical and Genealogical Society 1981:260

FORM PREPARED BY **Karen Hudson**

DATE **March 1996**

ADDRESS **Wilbur Smith Associates
465 East High Street, Suite 100
Lexington, KY 40507
(606) 254-5759
FAX (606) 254-5764**

WEST VIRGINIA HISTORIC PROPERTY FORM

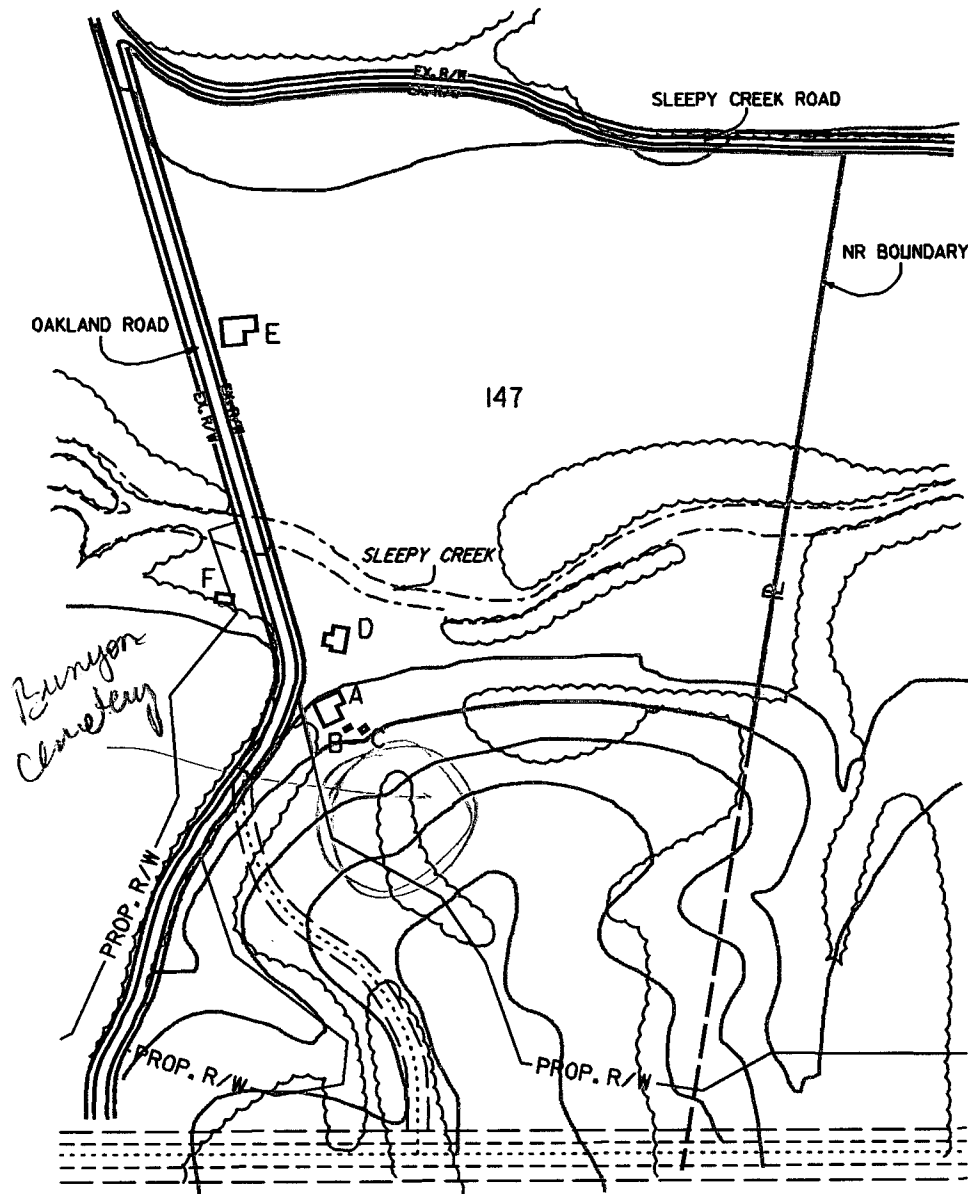
CONTINUATION SHEET

NAME West Virginia 522

SITE # 147 MN-0157

HISTORICAL CULTURAL SIGNIFICANCE

This is the Ward M. Dawson, Sr. Farm. On this site, Dawson operated a mill and cannery plant as well as the county's first John Deere dealership. The mill operated from about 1915 to 1955. All types of animal feeds were ground and mixed at this water powered flour milling operation. There was also a complete line of stone burr-ground pancake flour marketed by the brand name of "G-WHIZ-Ward M. Dawson & Sons"; and "DAWSON'S SPECIAL--Phoenixville Mills." Though no longer standing, there was also a canning factory on the farm which processed and marketed tomatoes, peaches, and green beans by the brand name "DAWSON'S FAVORITE", until it closed in 1946. Finally, in 1927 Dawson opened the county's first John Deere Farm Equipment dealership. The dealership operated out of the same structure as the mill. The Dawson farm has good integrity. It materially embodies important events in the County's agricultural history--milling, canning, and farm mechanization. Thus, it appears to be eligible for listing in the National Register of Historic Places.



0 100 200ft

SITE 147



Site 147. A



Site 147. A

MN-0157



Site 147. B



Site 147. C

MN-0157



Site 147. D

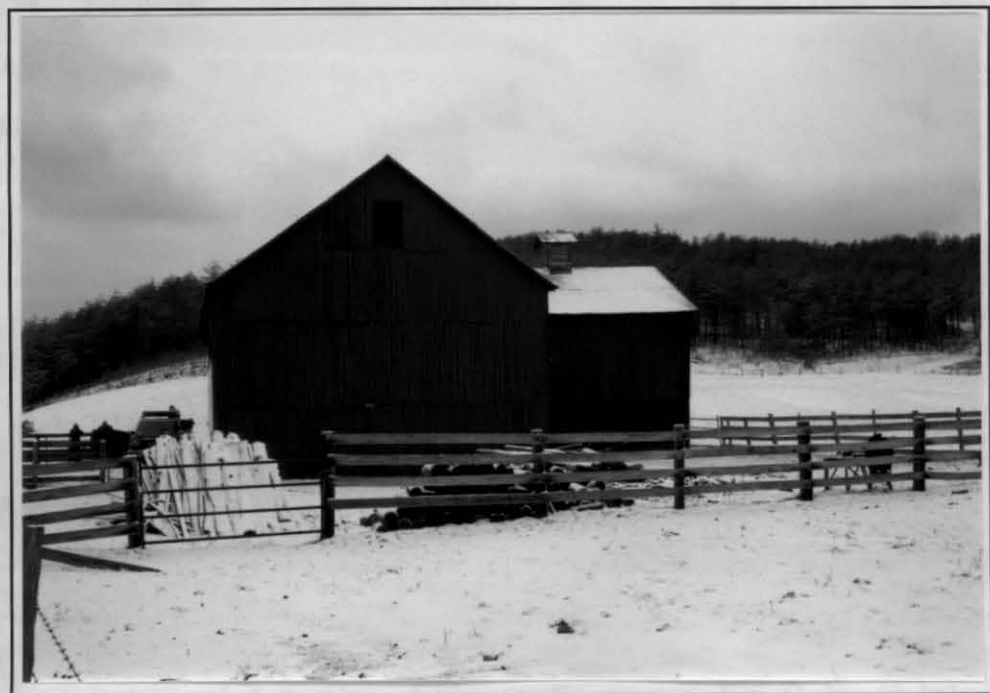


Site 147. D

MN-0157



Site 147. D



Site 147. E

WEST VIRGINIA HISTORIC PROPERTY FORM

CONTINUATION SHEET

Project Name: Ward Dawson Bridge Replacement

Survey #: State Project: S333-28-1.15

Survey / FR#: 14-198-MN

Form Prepared by Tracy D. Bakic (WVDOH) on January 15, 2014, Revised April 4, 2014.

Ward M. Dawson, Sr. Farm Historic District - Statement of Significance:

Morgan County was created from parts of Hampshire and Berkeley counties in 1820 while the area was still a part of the Commonwealth of Virginia. The town of Bath, officially established in 1776 and more popularly called Berkeley Springs, was known for its thermal springs and was one of the country's early health spas. Berkeley Springs became the county seat. The county was named for Daniel Morgan, a Revolutionary War hero who was said to have taken the areas waters for gout. Agriculture in the Morgan County was at its height in the early part of the 20th century. "Thousands of acres of tomatoes were cultivated, and more than two dozen canneries kept a large portion of the population engaged during the fall. From 1937 to 1941, the Tomato Festival provided a break for the workers in early September and brought thousands of visitors to Berkeley Springs" (Mozier 2013). Aside from forested land, agriculture is still the second largest land use in the county with beef cattle, horses, hay, corn, wheat and pasture being the principal products, with some apple and peach orchards remaining and vegetable production increasing due to demand for fresh produce by local markets (MCPC 2007: LU-2, SA-16).

The Ward M. Dawson, Sr. Farm is located about 10 miles south of Berkeley Springs in the county's Timber Ridge Magisterial District (WV SRC 1933) within an area at one time known as Phoenixville that included its own general store and post office (at least during the 1860s [Anderson 1975:299; MCH&GS 1981:90; PostalHistory.com]). H. Dawson was listed as the Phenixville[sic] post-master in 1861 (USDI 1861:159). By 1889 the post office was moved to the village of Omps, a couple miles east of Phoenixville, and was associated with Marion H. Marston's store and later, by 1916, with Havermale's Market (Anderson 1975:299;USDI 1890:792).

Ward McKinley Dawson, Sr. was born in Phoenixville on September 2, 1892, the youngest of the five children of Randolph Tucker Dawson and Emma E. (Beale) Dawson. Ward Sr.'s Dawson ancestors came to eastern Maryland from England by the 1670s and made their way to Morgan County and vicinity by the early 1800s. Ward Sr. was educated in Morgan County schools and attended Shenandoah College (in Dayton, VA). He married Lola Odessa Beeler in 1913 (Ancestry.com; MCH&GS 1981:89-90; WV Legis. 1953:184).

Ward Sr. and Lola lived at the three-story Dawson family residence built in Phoenixville by Ward Sr.'s grandfather, Henry Dawson. They had seven children between 1913 and 1928 – three sons and two daughters: Medford Randolph, Evelyn Rebecca, Ward McKinley Jr, Kenneth Clinton and Donald Ray, Edith Frances and Robert Harvey. In 1930, the old family house was razed and the existing nine-room brick home was built in the same location. This house and the farm were later owned by daughter Evelyn and her husband, Joseph D. Henry. In 1952, Ward Sr. and Lola built a new home along Route 522, adjoining Cacapon State Park. Ward Sr. died in 1974 and Lola in 1976 (Ancestry.com; MCH&GS 1981:90-91).

Historic information regarding the water-powered grist mill (ca. 1915-1955) and former cannery plant site on the Dawson Farm property was already supplied in previous documentation (Hudson 1996) and can also be found in *Morgan County, West Virginia and Its People* (MCH&GS 1981). The mill race starts at Sleepy Creek south of Oakland Rd. and extends downstream (north), through the extant concrete culvert and past the mill structure before reconnecting with Sleepy Creek. The cannery was operated from 1934-1946. Ward Sr. was founder of Dawson's Hardware & Equipment Company, beginning as a John Deere Farm Equipment dealer in 1927 at the Ward M. Dawson Sr. Farm. In 1934 this business was moved to Berkeley Springs and expanded to include hardware, appliances, plumbing, heating, air conditioning (MCH&GS 1981:90).

Ward M. Dawson, Sr. was a prominent Republican politician, serving six terms for Morgan County in the WV House of Delegates during the period from 1947 to 1960. He represented Timber Ridge District on the Morgan County Court/Commission for 12 years (including the 1930s and early 1940s), being elected president several times. He also was a member of: Morgan County Board of Education, Berkeley Springs Junior Order of United American Mechanics, Lions Club, Small Business Administration, Farm Bureau, WV Merchants Association, and the Hardware Association of the Virginias. He and his wife were members of Union Chapel United Methodist Church, where Ward Sr. acted as Sunday school superintendent for 25 years and where both are interred at the associated cemetery (*County Newsteller* 1940:6; MCH&GS 1981:90-91; PoliticalGraveyard.com 2013; WV Legis. 1931:341).

WEST VIRGINIA HISTORIC PROPERTY FORM

CONTINUATION SHEET

Project Name: Ward Dawson Bridge Replacement

Survey #: State Project: S333-28-1.15

Survey / FR#: 14-198-MN

Form Prepared by Tracy D. Bakic (WVDOH) on January 15, 2014, Revised April 4, 2014.

County Route 28

There is a public road known locally as Oakland Road that extends through the Ward M. Dawson, Sr. Farm, dividing the farm into two sections (see map on p.24). The majority of Dawson farm structures are to the north side of the road and the former Dawson cannery facility, along with three other ancillary structures are to the south side. The road is depicted on maps surveyed in the mid-1880s and mid-1910s, extending for about five miles from future US 522 into Oakland and then to future County Route 8/5 that parallels the South Fork of Sleepy Creek. It appears to have provided access to several properties/structures, including two schools (White, M. W. 1916; USGS 1884 & 1923). In 1909, the office of the WV State Commissioner of Public Roads was created to provide state aid for county road maintenance and construction. A public road was defined as "any road, leading from any person's land, which had been established for the convenience of one of more residents occupying and desiring to use land which could not be reached from any other public road" (SRC 1941:128-29). The Oakland Road appears to have fit that description and likely was considered such.

The office of the Commissioner of Public Roads was abolished in 1911 and replaced by the State Road Bureau in 1913 which, in turn, was replaced by the State Road Commission (SRC) in 1917 (SRC 1941:130-33). An April 2014 review of SRC Annual Reports found the earliest documentation of County District grading work (0.5 miles worth) on an Oakland-related roadway dated within the July 1931 to June 1932 period (WV SRC 1932:151). "Secondary State Route" 28 was labeled on highway maps as unimproved in 1933, graded and drained by 1940, soil-surfaced by the 1950s, and finally paved with a bituminous surface by 1964. The road was not labeled on maps as a County Route 28 until around 1968 (WV SRC maps 1933-1968). At least until the 1970s, CO 28 extended for about five miles. At some point, the eastern approx. 1.9 miles of the road became associated with CO 8 and CO 8/18, so that today CO 28's is about 3.2 miles long with its eastern terminus is at CO 8 (aka, Virginia Line Road [WVDOH 1970; WVDOT 1998]).

The portion of CO 28 – including a bridge and culvert – that extend past the subject farmstead is public road and is within State-owned ROW. It was not solely for the use of the Ward M. Dawson, Sr. farm.

Bridge and Culvert. An extant concrete arch bridge and concrete culvert that are part of CO 28 (Oakland Road) are located within State-owned ROW the bisects the Ward M. Dawson, Sr. farm property. The Ward Dawson Bridge was built in 1920 by contractor H. F. Ringeling. The structure is a single span concrete arch deck bridge that includes parapets/railings (with incised rectangular decoration) and abutments with wing walls. The overall measurements of the bridge are 43'-9" long by 18'-3" wide. The width between railings is 16'-8". H. F. Ringeling was a Maryland native and an engineer, serving as an inspector with Maryland State Road Commission prior to military duty in WWI. After the war, he lived in Baltimore until at least 1920, after which he moved southward working as an engineer for projects in Alabama and later Florida and Georgia. He passed away in Georgia in 1946 at age 64. Ringeling's name does not currently appear to be noted as contractor for other bridges inventoried or otherwise noted in WV or MD.¹ It is possible that Ringeling was awarded this particular bridge contract as a step in re-establishing his engineering career post-war and perhaps was his only bridge contracting effort. Concrete arch bridges were one type of bridge consistently built in WV between 1918 and 1940 (KCI. This particularly arch bridge is does not represent the work of a master, nor does it exhibit significant aesthetic or custom-designed treatment.

The extant concrete box culvert over the former Ward M. Dawson, Sr. Farm mill race was likely built circa 1920 by the state or county forces. The type of crossing structure the culvert may have replaced is unknown. The culvert includes concrete railings, wing walls and chamfered edgings, and its overall measurements as it extends over Oakland Road are 7'-2" long by 18'-9" wide. The width between railings is 17'-5". This structure is an example of standard small box culvert design used in WV road construction by the 1910s and does not represent the work of a master or exhibit significant aesthetic or custom-designed treatment.

At the time the bridge and culvert were built, the Dawson farm and mill were active. Although these structures have a visual connection with the farm property, the extant crossing structures were not built for the specific use of the Dawson farm as they are part of a public road providing access to all nearby residents and general travelers between intersecting north-south thoroughfares and to the community of Oakland and vicinity. The principal products of the entire county in the early 20th century were all agricultural and good roads would have been important to commerce throughout (SCWA 2006:18; White, I. C 1905, 1914). The Ward Dawson Bridge and nearby culvert on CO 28 represent

WEST VIRGINIA HISTORIC PROPERTY FORM

CONTINUATION SHEET

Project Name: Ward Dawson Bridge Replacement

Survey #: State Project: S333-28-1.15

Survey / FR#: 14-198-MN

Form Prepared by Tracy D. Bakic (WVDOH) **on** January 15, 2014, **Revised** April 4, 2014.

common construction for the period built and are no different in economic or cultural value to waterway crossings constructed in Morgan County's vast rural landscape.

Installing plaques on road bridges to identify the contractor/builder and county officials was common practice. One of the plaques installed in 1920 on the Ward Dawson Bridge identifies B. E. Dawson as one of the county commissioners at the time. Burton Engle Dawson was a farmer in Morgan County and was Ward M. Dawson, Sr.'s older cousin (by about 26 years). Burton was the son Henry Washington Dawson, a brother of Ward's father, Randolph. Ward and Burton shared the same grandfather, Henry Dawson (ancestry.com). Burton was a County Commissioner from 1916 to 1920, serving as President from 1917 to 1920 (Harris 1916, 1917, 1920). There were several county bridge projects during his tenure (SRC 1919-1921). Along with the Ward Dawson Bridge, there are two other County bridges, both concrete arches, known to have or have had plaques with B. E. Dawson's name: New Hope Bridge, built 1916 in the northern part of the county, and Smith Crossroad Bridge, built mid-county in 1917 (Mead & Hunt and KCI 2011). There were likely other bridges with plaques including B.E. Dawson's name, but those bridges are gone or the plaques removed. The Ward Dawson and Cherry Run arch bridges would have been two of the last bridges built while B. E. Dawson was a commissioner. In 1920, Ward M. Dawson, Sr. was in his mid-20s and with a young and growing family and does not appear to have been politically-involved in a significant way at that time (Ancestry.com). Research has not found documentation related to the Ward Dawson Bridge being a significant result of local- or family-related politics.

Historic District Boundaries and Structures

The NR-eligible boundaries for the Ward M. Dawson, Sr. Farm Historic District have been based on tax parcel boundaries where appropriate and then focusing on the portion of the historic farm holdings that encompasses the buildings and structures of the farmstead. The boundaries include structures that have historically been part of or near the farmstead during its period of significance, previously determined by Wilbur Smith Associates to be ca. 1915 to 1955, the approximate last year that Dawson's mill operated (Hudson 1996).

WVDOH delineated the historic district boundary (see Maps on pp. 22-24) to include:

- The portion of County Tax Assessor's Parcel 2 north of CO 28 which includes the Barn and open rural land to the north parcel boundary and ending in alignment with the east boundary of Parcel 2.2;
- The portion of the same Parcel 2 south of CO 28 that includes the south segment of the Mill-Race, the Former Cannery Site, Outbuilding (shed-roofed), Garage and Metal Shed;
- All of County Tax Assessor's Parcel 2.2 (1191 Oakland Rd.) which includes the Mill building, House, Smokehouse, Outbuilding (gable-roofed), gazebo and north segment of the mill-race.
- All of County Tax Assessor's Parcel 2.3 which includes a modern Ranch-style house.
- The portion of WV State ROW (on CO 28) that extends from just west of the Ward Dawson Bridge to the east end of the overall historic district boundary.

Contributing Elements of the Ward Dawson, Sr. Farm Historic District, ca. 1915-1955:

- Mill Building, ca. 1915 (3-story wood-framed, arched-roofed, w/ 2-story gable-roofed section on S. side)
- Mill Race, ca. 1915
- American Bungalow-style House, ca. 1930 (brick w/ E/W-aligned stone basement walls; wood shingle-sided gable ends and dormers; paneled wood-sided bay window at S. side. Associated masonry pillars and retaining walls.
- Brick Smokehouse, ca. 1930 (behind house; has concrete gable-style roof)
- Wood-framed, Gable-roofed Outbuilding, ca. 1930 (behind house; has diagonal wood board siding; Insul-brick sheet wall covering)
- Barn, ca. 1915 (0.1 miles west Mill Building; L-shape plan; wood-framed; metal-surfaced gable roofing; vented cupola on N. roof; large wooden sliding track door at S. side.
- Site of Former Cannery, 1934-1946
- Wood-framed, Shed-roofed Outbuilding (poss. outhouse or utility structure), ca. 1930+; over 50 yrs. old
- Ward Dawson Bridge, 1920
- Culvert (over mill-race), ca. 1920

WEST VIRGINIA HISTORIC PROPERTY FORM

CONTINUATION SHEET

Project Name: Ward Dawson Bridge Replacement

Survey #: State Project: S333-28-1.15

Survey / FR#: 14-198-MN

Form Prepared by Tracy D. Bakic (WVDOH) on January 15, 2014, Revised April 4, 2014.

Non-Contributing Elements within the historic district:

- Gambrel-roofed Shed, ca. 1996+ (next to mill structure)
- Gazebo, ca. 1980+
- Ranch House, ca. 2006
- Gambrel-roofed Garage & Metal Shed, ca. 1980+ (near Former Cannery site)

Criteria Evaluation:

The farm was previously evaluated in 1996 in conjunction with the Historic Structures Survey – U.S. Route 522 Improvement Corridor by Wilbur Smith Associates. The farm was found to have good integrity and to embody “important events in the County’s agricultural history” and to have a period of significance from ca. 1915 until 1955, the approximate last year Dawson’s mill operated (Hudson 1996). In a letter dated February 5, 1998, the West Virginia State Historic Preservation Officer (WVSHPO) concurred with the site’s National Register of Historic Places (NRHP) eligibility under Criterion A for its association with early commercial agriculture (Pierce 1998). The 1996 evaluation did not include the Ward Dawson Bridge or nearby culvert (over the mill race). In the *WV Statewide Historic Bridge Survey: Revised Draft Final Report*, the consultant, the West Virginia Department of Highways (WVDOH) and the WVSHPO agreed that the Ward Dawson Bridge was not eligible to the NRHP and required no further evaluation (KCI and Mead & Hunt Feb. 2013:5, Appendix A p.58). WVDOH research and evaluation of the culvert in Oct. 2013 (Bakic 2013), determined that it was not individually NRHP-eligible. Although both the Ward Dawson Bridge and nearby culvert are not individually significant, they both retain adequate integrity in all aspects and contribute to the historic viewshed of the Ward M. Dawson, Sr. Farm having been constructed within the period of significance. On October 11, 2013 WVDOH visited the farm site and noted that the mill structure is in a dilapidating state with its arched roof caved-in. However, at present this building’s structural fabric is likely intact or evident enough for historically sympathetic repair/restoration to be possible. Therefore, all contributing structures appear to adequately retain all aspects of integrity and the Ward Dawson, Sr. Farm continues to be a NRHP-eligible property under Criterion A.

The existing property is associated with a person – Ward McKinley Dawson, Sr. – that was an important county figure in local business and politics. He managed a successful farm, mill and cannery, as well as a long-running local hardware business that started as his farm as Morgan County’s first John Deere dealership. During his life on the farm, Ward Sr. also started his tenure in politics as a Republican representative in the Morgan County court and the State House of Delegates. As such, the Ward M. Dawson, Sr. Farm is eligible at a local level of significance under NRHP Criterion B.

The existing property represents typical farmstead site usage and functional building design, does not represent the work of a master and does not exhibit overly significant aesthetic or custom-designed treatment. Therefore, this property and its components do not meet NRHP Criterion C.

This property is not likely to have important information that will contribute to our understanding of human history or prehistory. Construction appears to have utilized commonly known techniques, tools and materials. The potential for information is minimal, so it does not meet NRHP Criterion D.

Bibliographical References

Ancestry.com. Family trees and census information related to Ward. M(cKinley) Dawson, Sr. and B. E. Dawson.

Anderson, Rual Purcell. *Genealogy: Spade, Anderson, Whitacre, and a number of allied families: also, historical facts and memoirs*. Stasburg, VA: Shenandoah Pub. House, 1975.

Bakic, Tracy D. West Virginia Historic Property Inventory Form – Oakland Road over Ward Dawson, Sr. Farm Mill Race (HPI-1). Part of Historic Resources Management Report, Ward Dawson Bridge Replacement, County Route 28, Morgan County (Bakic/WVDOH, November 2013).

County Newsteller (The). “County Court Presidents Named.” Vol. 2, No. 4. Jan. 1940. Spencer, WV: Casto & Harris Inc., 1940.

Harris, John T. *West Virginia Legislative Hand Book and Official Register*. Charleston, WV: Tribune Printing Company, 1916 (p.138), 1917 (p.113), 1920 (p.773).

WEST VIRGINIA HISTORIC PROPERTY FORM CONTINUATION SHEET

Project Name: Ward Dawson Bridge Replacement

Survey #: State Project: S333-28-1.15

Survey / FR#: 14-198-MN

Form Prepared by Tracy D. Bakic (WVDOH) on January 15, 2014, Revised April 4, 2014.

Bibliographical References (cont.)

Hudson, Karen/Wilbur Smith Associates. West Virginia Historic Property Inventory Form – Ward M. Dawson, Sr. Farm (MN-0011-0147). March 1996. Part of *Historic Resources Survey – US Route 522 Improvement Corridor* (Wilbur Smith Associates, 1997). On file, WV State Historic Preservation Office, Charleston.

KCI Technologies and Mead & Hunt, Inc. West Virginia Statewide Historic Bridge Survey: Revised Draft Final Report. Feb. 2013.

Mead & Hunt and KCI. Historic Bridge Inventory Forms for SHPO Survey Nos. MN-0232 (New Hope Bridge) and MN-0238 (Smith Crossroad Bridge). Forms completed in 2011 in conjunction with *West Virginia Statewide Historic Bridge Survey: Revised Draft Final Report* (prepared for WVDOT, February 2013).

Morgan County Historical & Genealogical Society. *Morgan County, West Virginia and Its People*. Berkeley Springs, WV: The Society, 1981.

Morgan County Planning Commission (MCPC). *Morgan County Comprehensive Plan*. 2007.
<http://www.morgancountywv.gov/Commission/page86/index.html> (February 2014).

Mozier, Jeanne. "Morgan County." *E-WV - The West Virginia Encyclopedia*. Last revised June 2013.
<http://www.wvencyclopedia.org/articles/2044>, October 2013.

Pierce, Susan M., WV State Historic Preservation Officer. Letter to Mr. Joe Deneault, State Highway Engineer, Division of Highways, Charleston, WV. February, 5, 1998. PoliticalGraveyard.com. West Virginia House of Delegates, 1940s & 1950s. Website last revised Dec. 29, 2013. <http://politicalgraveyard.com/geo/WV/ofc/> (Jan. 2014).

Seifert, Donna J. National Register Bulletin: Defining Boundaries for National Register Properties. US Dept. of the Interior, National Park Service, Washington DC.

Sleepy Creek Watershed Association (SCWA). *Sleepy Creek Watershed Assessment*. March 2006.

US Department of the Interior (USDI). *Register of Officers and Agents, Civil, Military, and Naval, in the Service of the United States on the Thirtieth September, 1861*. Washington DC: Government Printing Office, 1862.

---. *Official Register of the United States, Containing a List of the Officers and Employees in the Civil, Military, and Naval Service of the First of July, 1889*. Washington DC: Government Printing Office, 1890.

USends.com. "End of US highway 522", page created 2000, updated to 2009, copyright 2012 (Dale Sanderson),
<http://www.usends.com/20-29/522/522.html> (October 2013)

West Virginia (WV) Dept. of Highways (WVDOH). *General Highway Map, Morgan County, West Virginia*. 1966, updated 1970.

WV Dept. of Transportation (WVDOT). *General Highway Map, Morgan County, West Virginia*. 1998.

WV Legislature. *West Virginia Blue Book (West Virginia Legislative Hand Book and Manual and Official Register)*. Charleston, WV: Tribune Printing Co., 1931.

---. *West Virginia Blue Book*, 1953. Vol. 37. Charleston, WV.

WV State Road Commission (SRC). *Annual Report, July 1, 1917 to July 1, 1919*. Charleston, WV: Tribune Printing Co., 1919.

---. *Annual Report, July 1, 1917 to July 1, 1919*. Charleston, WV: Tribune Printing Co., 1920.

---. *Annual Report, July 1, 1920 to July 1, 1921*. Charleston, WV: Jarrett Printing Co., 1921.

---. *Annual Report, Fiscal Year Ending June 30, 1932*. Charleston, WV: Jarrett Printing Company, 1932.

---. *Annual Report, Fiscal Year Ending June 30, 1941*. Charleston, WV: Mathews Ptg. & Litho. Co., 1941.

---. *General Highway Map, Morgan County, West Virginia*, 1952, updated 1954; 1952, updated 1957; 1961, updated 1964; 1961; updated 1966; and 1966, updated 1968.

WEST VIRGINIA HISTORIC PROPERTY FORM

CONTINUATION SHEET

Project Name: Ward Dawson Bridge Replacement

Survey #: State Project: S333-28-1.15

Survey / FR#: 14-198-MN

Form Prepared by Tracy D. Bakic (WVDOH) on January 15, 2014, Revised April 4, 2014.

---. *Map of Morgan County, Primary and Secondary Highways*. 1933.

---. *Transportation Map, Morgan County, West Virginia*, 1937, Revised 1940.

White, I. C. *Map of Jefferson, Berkeley and Morgan County Showing Topography*. 1916.

---. *Map of West Virginia Showing Railroads and County Products*. Morgantown, WV: WVGS, 1905.

--. *Map of West Virginia Showing Railroads and County Products*. Morgantown, WV: WVGS, 1914.

White, M. Wood. *White's Topographical, County & District Atlas of West Virginia, Counties of Morgan, Berkeley, Jefferson . . .*
Grafton, WV: White, 1873.

USGS. *Capon Bridge (VA-WV) 15 Minute Topographic Quadrangle Map*. Edition of 1923, surveyed 1914 and 1921.

---. *Gerrardstown (WV) 15 Minute Topographic Quadrangle Map*, Edition of 1916, surveyed 1914.

---. *Winchester (WV-VA) Topographic Map, 1:125,000*. Surveyed 1883-85. Edition of March 1894, reprinted 1916.
http://www.lib.utexas.edu/maps/topo/west_virginia/txu-pclmaps-topo-wv-winchester-1885.jpg

¹ The following resources were consulted in researching H. F. Ringeling:

Ancestry.com. Review of historical records related Henry Fred (H. F.) Ringeling (Oct. 2013).

Alabama. *Annual Report of the Auditor of the State of Alabama for the Fiscal Year Ending September 30, 1924*. Published 1925. Excerpt Viewed on Google Books (October 2013).

Bruder, Anne. Architectural Historian, MD State Highways Administration. Personal communication with Tracy Bakic, WVDOH, October 2013. Provided copy of the list of Concrete Arches in MD Bridge Inventory. Reviewed historic State Road Commission reports for 1910 to 1920 for possible other references to H. F. Ringeling.

Clewiston News. "Henry F. Ringeling, P.W.A. engineer . . . visitor here Thursday." Vol. 10, No. 33, p.1, c.2, Aug. 28, 1936.

Georgia. Dept. of Audits and Accounts. *Report of the State Auditor*. Published 1946. Excerpt viewed on Google Books (October 2013).

KCI Technologies, Inc. *West Virginia Statewide Historic Bridge Survey: Draft Historic Context*. 2006.

KCI Technologies and Mead & Hunt, Inc. *West Virginia Statewide Historic Bridge Survey: Revised Draft Final Report*. Feb. 2013.

Kemp, Emory, L. *West Virginia's Historic Bridges* (Kemp 1984) and updated inventory (1990)

Maryland. State Roads Commission. *Fifth, Sixth, Seventh and Eighth Annual Reports of the State Roads Commission for the Years 1912, 1913, 1914 and 1915*. Kohn & Pollock, Inc.: Baltimore, 1916. Viewed on Google Books (October 2013).

P.A.C. Spero & Co. and Louis Berger Assoc. *Historic Highway Bridges in Maryland: 1631-1960, Historic Context Report*. 1995.

URS Corp. *Historic Context Study of Pre-1956 Highway Bridges of West Virginia*. 2002.

West Virginia. State Roads Commission. Review of *Annual Reports* for 1910s and 1920s for possible reference to Ringeling.

WEST VIRGINIA HISTORIC PROPERTY FORM CONTINUATION SHEET

Project Name: Ward Dawson Bridge Replacement

Survey #: State Project: S333-28-1.15

Survey / FR#: 14-198-MN

Form Prepared by Tracy D. Bakic (WVDOH) on January 15, 2014, Revised April 4, 2014.



View Northeast. Culvert (over Mill Race) in foreground. Mill Structure and ca. 1930 House in view. Photo taken 10-11-2013.



View NW, looking west on CO 28 (Oakland Rd.). Portion of Mill Structure to right; Dawson Barn is in distance. Photo taken 10-11-2013.

WEST VIRGINIA HISTORIC PROPERTY FORM

CONTINUATION SHEET

Project Name: Ward Dawson Bridge Replacement

Survey #: State Project: S333-28-1.15

Survey / FR#: 14-198-MN

Form Prepared by Tracy D. Bakic (WVDOH) on January 15, 2014, Revised April 4, 2014.



View West/NW. Ward Dawson Bridge with Dawson Barn and Ranch House in View. Photo taken 10-11-2013.



View Northeast. Dawson Mill Structure. Photo taken 10-11-2013.

WEST VIRGINIA HISTORIC PROPERTY FORM CONTINUATION SHEET

Project Name: Ward Dawson Bridge Replacement

Survey #: State Project: S333-28-1.15

Survey / FR#: 14-198-MN

Form Prepared by Tracy D. Bakic (WVDOH) on January 15, 2014, Revised April 4, 2014.



View Northeast. Dawson Mill Structure. Photo taken 10-11-2013.



View Northwest. Dawson Mill Structure. Photo taken 10-11-2013.

WEST VIRGINIA HISTORIC PROPERTY FORM CONTINUATION SHEET

Project Name: Ward Dawson Bridge Replacement

Survey #: State Project: S333-28-1.15

Survey / FR#: 14-198-MN

Form Prepared by Tracy D. Bakic (WVDOH) on January 15, 2014, Revised April 4, 2014.



View Southwest. Dawson Mill Structure and ca. 1996+ Gambrel-roofed Shed. Photo taken 10-11-2013.



View Northeast. Mill-race, looking from concrete culvert deck toward the mill-race passing the west side of the mill building. Photo taken 10-11-21014.

WEST VIRGINIA HISTORIC PROPERTY FORM CONTINUATION SHEET

Project Name: Ward Dawson Bridge Replacement

Survey #: State Project: S333-28-1.15

Survey / FR#: 14-198-MN

Form Prepared by Tracy D. Bakic (WVDOH) on January 15, 2014, Revised April 4, 2014.



View Southeast. Mill-race, taken from near the mill-race re-entry to Sleepy Creek, looking toward the west side of the Mill Building. Photo taken 10-11-2013.



View Southwest. Mill-race, looking southward from the concrete culvert deck. Photo taken 10-11-2013.

WEST VIRGINIA HISTORIC PROPERTY FORM CONTINUATION SHEET

Project Name: Ward Dawson Bridge Replacement

Survey #: State Project: S333-28-1.15

Survey / FR#: 14-198-MN

Form Prepared by Tracy D. Bakic (WVDOH) on January 15, 2014, Revised April 4, 2014.



View NE. American Bungalow-style House (ca. 1930). Note the stone (with mortar) walls and entry pillars and the incised concrete pillar. Photo taken 10-11-2013.



View Northeast. American Bungalow –Style House, ca. 1930. Photo taken 10-11-2013.

WEST VIRGINIA HISTORIC PROPERTY FORM CONTINUATION SHEET

Project Name: Ward Dawson Bridge Replacement

Survey #: State Project: S333-28-1.15

Survey / FR#: 14-198-MN

Form Prepared by Tracy D. Bakic (WVDOH) on January 15, 2014, Revised April 4, 2014.



View Southeast. American Bungalow-Style House, ca. 1930. The gabled brick garage entry is a later addition (but under 50 years old). Photo taken 10-11-2013.



View Southeast. Wood-framed Outbuilding and Brick Smokehouse. Northwest Corner of House is in view (to right). Photo taken 12-4-2013.

WEST VIRGINIA HISTORIC PROPERTY FORM

CONTINUATION SHEET

Project Name: Ward Dawson Bridge Replacement

Survey #: State Project: S333-28-1.15

Survey / FR#: 14-198-MN

Form Prepared by Tracy D. Bakic (WVDOH) on January 15, 2014, Revised April 4, 2014.



View SE. Wood-framed, Gable-roofed Outbuilding located behind house. Structure has: seamed metal roof surfacing, diagonal wood board sheathing, and remnants of Insulbrick siding (faux-brick, tar-impregnated sheeting used ca. 1930-1960s). Photo Taken 12-4-2013.



View SE. Bridge Smokehouse behind house. Photo taken 12-4-2013.

WEST VIRGINIA HISTORIC PROPERTY FORM CONTINUATION SHEET

Project Name: Ward Dawson Bridge Replacement

Survey #: State Project: S333-28-1.15

Survey / FR#: 14-198-MN

Form Prepared by Tracy D. Bakic (WVDOH) on January 15, 2014, Revised April 4, 2014.



View North/Northeast. Gazebo, less than 50 years old. Located north of CO 28 (Oakland Rd.) b/w Sleepy Creek and the Mill-race. Photo taken 10-11-2013.



View South. Outbuilding (possible outhouse or utility structure). Photo taken 10-11-2013.

WEST VIRGINIA HISTORIC PROPERTY FORM

CONTINUATION SHEET

Project Name: Ward Dawson Bridge Replacement

Survey #: State Project: S333-28-1.15

Survey / FR#: 14-198-MN

Form Prepared by Tracy D. Bakic (WVDOH) on January 15, 2014, Revised April 4, 2014.



View Southwest. Gambrel-roofed Garage (less than 50 yrs old). Photo taken 10-11-2013.



View Northeast. Gambrel-roofed Garage and Metal Shed (both – less than 50 yrs old). Photo taken 10-11-2013.

WEST VIRGINIA HISTORIC PROPERTY FORM CONTINUATION SHEET

Project Name: Ward Dawson Bridge Replacement

Survey #: State Project: S333-28-1.15

Survey / FR#: 14-198-MN

Form Prepared by Tracy D. Bakic (WVDOH) on January 15, 2014, Revised April 4, 2014.



View Northwest. Barn located about 275 feet west of Ward Dawson Bridge. Photo taken 10-11-2013.



View Northeast. Barn located about 275 feet west of Ward Dawson Bridge. Photo taken 10-11-2013.

WEST VIRGINIA HISTORIC PROPERTY FORM

CONTINUATION SHEET

Project Name: Ward Dawson Bridge Replacement

Survey #: State Project: S333-28-1.15

Survey / FR#: 14-198-MN

Form Prepared by Tracy D. Bakic (WVDOH) on January 15, 2014, Revised April 4, 2014.



View North/Northwest. Ca. 2006 Ranch-style House. Photo taken 10-11-2013.



View East/Southeast. Ward Dawson Bridge - West Side Approach. Photo taken 10-11-2013.

WEST VIRGINIA HISTORIC PROPERTY FORM CONTINUATION SHEET

Project Name: Ward Dawson Bridge Replacement

Survey #: State Project: S333-28-1.15

Survey / FR#: 14-198-MN

Form Prepared by Tracy D. Bakic (WVDOH) on January 15, 2014, Revised April 4, 2014.



View Northeast. Ward Dawson Bridge. Taken from West of the Bridge, Highlighting South Elevation. Photo taken 10-11-2013.



View North. Ward Dawson Bridge - South Elevation (Upstream Side). Photo taken 10-11-2013.

WEST VIRGINIA HISTORIC PROPERTY FORM

CONTINUATION SHEET

Project Name: Ward Dawson Bridge Replacement

Survey #: State Project: S333-28-1.15

Survey / FR#: 14-198-MN

Form Prepared by Tracy D. Bakic (WVDOH) on January 15, 2014, Revised April 4, 2014.



Inset Metal Plaque (approx. 14" x 6.5") at Northeast Wing Wall that reads "H. F. RINGELING / CONTRACTOR." View Northwest. Photo taken 10-11-2013.



Inset Metal Plaque (approx. 14" x 9.5") at Southwest Wing Wall that reads "MORGAN COUNTY W. VA. / 1920 / COUNTY COMMISSIONERS / B. E. DAWSON, PRES. / F. E. RICE / M. S. HARMISON, CLERK / F. L. HAWKINS, ENGR." View Southeast. Photo taken 10-11-2013.

WEST VIRGINIA HISTORIC PROPERTY FORM CONTINUATION SHEET

Project Name: Ward Dawson Bridge Replacement

Survey #: State Project: S333-28-1.15

Survey / FR#: 14-198-MN

Form Prepared by Tracy D. Bakic (WVDOH) on January 15, 2014, Revised April 4, 2014.



View South. Culvert over Former Mill Race – North Elevation. Photo taken 10-11-2014.



View North/Northwest. Culvert over Former Mill Race – South Elevation. Photo taken 10-11-2014

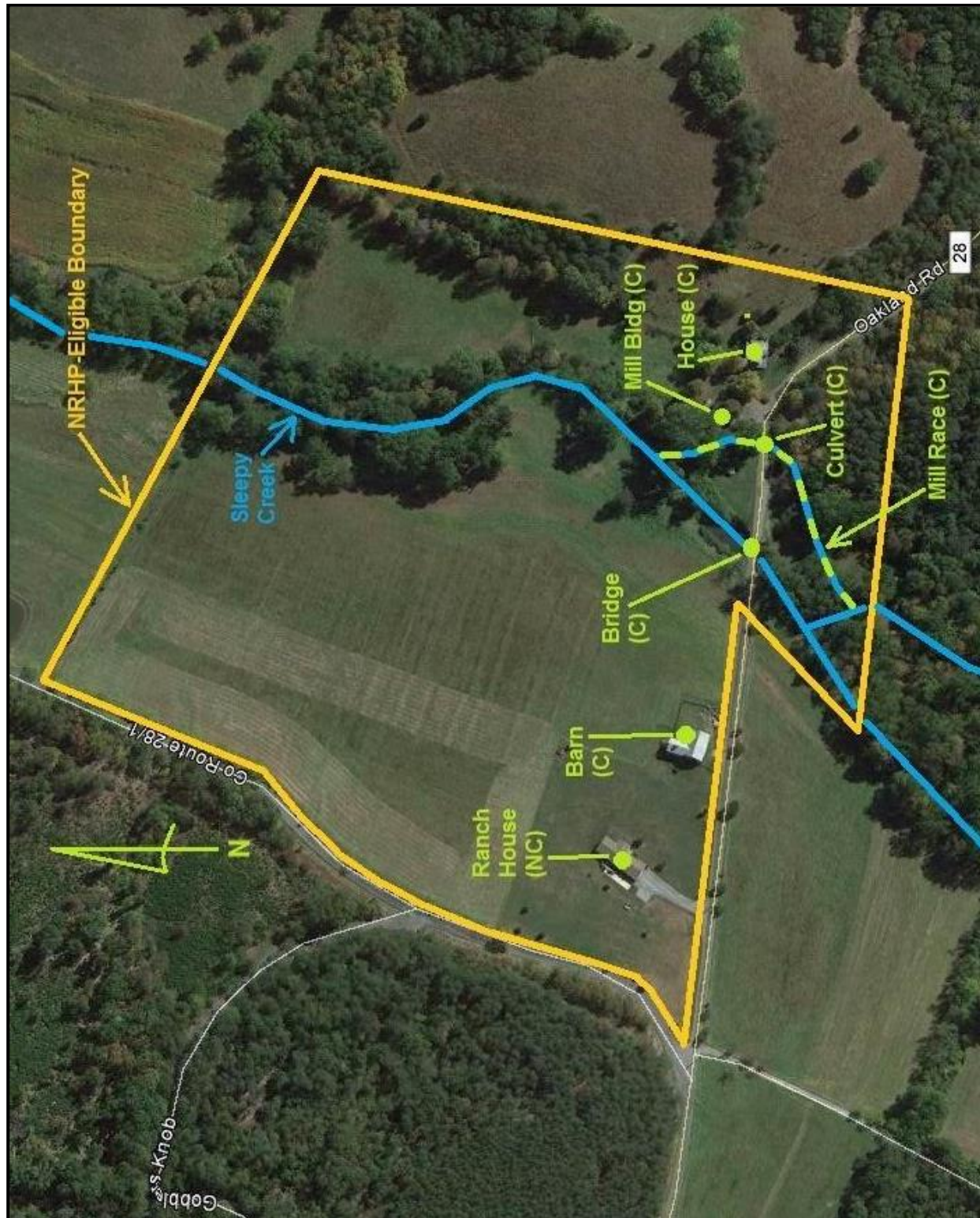
WEST VIRGINIA HISTORIC PROPERTY FORM CONTINUATION SHEET

Project Name: Ward Dawson Bridge Replacement

Survey #: State Project: S333-28-1.15

Survey / FR#: 14-198-MN

Form Prepared by Tracy D. Bakic (WVDOH) on January 15, 2014, Revised April 4, 2014.



Aerial View (Google Earth) Showing National Register of Historic Places (NRHP)-eligible boundary for the Ward M. Dawson, Sr. Farm. "C" identifies a contributing structure and "NC" a non-contributing structure. Drawn waterway alignments are approximate.

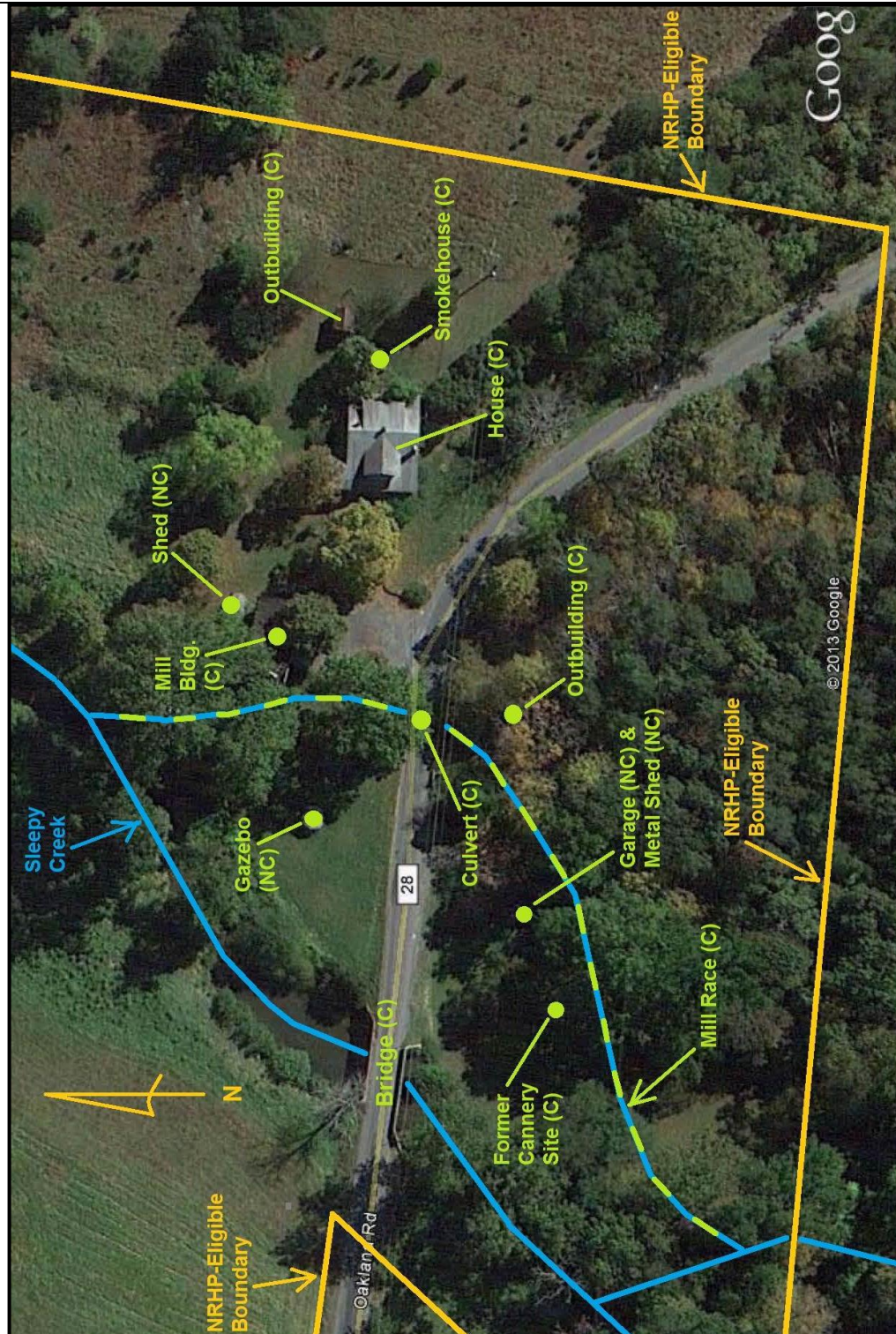
WEST VIRGINIA HISTORIC PROPERTY FORM CONTINUATION SHEET

Project Name: Ward Dawson Bridge Replacement

Survey #: State Project: S333-28-1.15

Survey / FR#: 14-198-MN

Form Prepared by Tracy D. Bakic (WVDOH) on January 15, 2014, Revised April 4, 2014.



Aerial View (Google Earth) Showing National Register of Historic Places (NRHP)-eligible boundary for the Ward M. Dawson, Sr. Farm. "C" identifies a contributing structure and "NC" a non-contributing structure. Drawn waterway alignments are approximate.

WEST VIRGINIA HISTORIC PROPERTY FORM

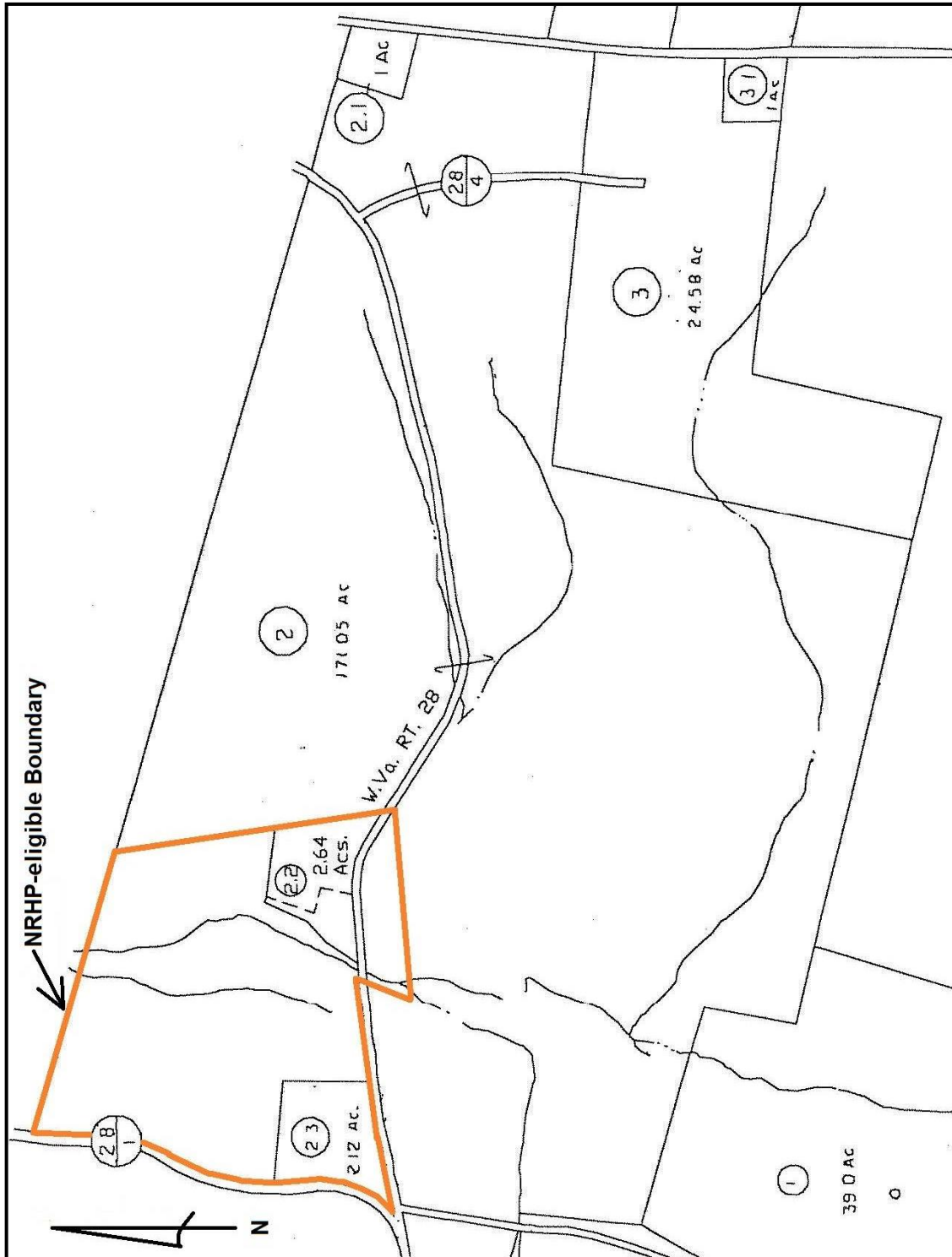
CONTINUATION SHEET

Project Name: Ward Dawson Bridge Replacement

Survey #: State Project: S333-28-1.15

Survey / FR#: 14-198-MN

Form Prepared by Tracy D. Bakic (WVDOH) on January 15, 2014, Revised April 4, 2014.



Morgan County Tax Assessor's Map of Timber Ridge District, District 6, Map 7 on WVDOT digital network files (April 2014). Property Owners:

Parcel 2: Robert W. Henry, & Portia M., Ray A., Karen L., Cheryl, 1039 Oakland Rd, Berk. Springs, WV 25411

Parcel 2.2: David Nathanson & Sharon Woodbine, 63 Holworthy St., Cambridge, MA 02138

Parcel 2.3: Cheryl Henry, 1039 Oakland Rd. Berkeley Springs, WV 25411.

**MEMORANDUM OF AGREEMENT
BY AND AMONG
THE WEST VIRGINIA STATE HISTORIC PRESERVATION OFFICER AND THE
WEST VIRGINIA DIVISION OF HIGHWAYS**

**REGARDING IMPLEMENTATION OF THE
WARD DAWSON BRIDGE REPLACEMENT PROJECT
STATE PROJECT # S333-28-1.15
MORGAN COUNTY, WEST VIRGINIA
JUNE 2014**

WHEREAS, the West Virginia Division of Highways (WVDOH) proposes to replace the Ward Dawson Bridge which spans over Sleepy Creek and the nearby box culvert which spans over a millrace related to Sleepy Creek, both on Oakland Road (County Route 28) in Morgan County, hereinafter referred to as the "Project."

WHEREAS, the WVDOH has determined that the Project will have an adverse effect upon the Ward M. Dawson, Sr. Farm Historic District, a property eligible for listing on the National Register of Historic Places (NRHP) and of which the Ward Dawson Bridge and the nearby culvert are contributing elements of; and

WHEREAS, the WVDOH has consulted with the West Virginia State Historic Preservation Officer (WVSHPO) pursuant to West Virginia Code Chapter 29, Article 1 and its implementing regulations (82 CSR 2), as well as 36 CFR Part 800.5 Implementing Section 106 of the National Historic Preservation Act; (16 U.S.C., 470f); and

WHEREAS, the WVDOH has contacted the Preservation Alliance of West Virginia and the Morgan County Historical and Genealogical Society; and

WHEREAS, the WVDOH has determined that the Project will not affect archaeological properties; and

NOW, THEREFORE, the WVSHPO and the WVDOH agree that the undertaking will be implemented in accordance with the following stipulations in order to take into account the effects of the undertaking on historic properties.

STIPULATIONS

The WVDOH shall ensure that the following stipulations are carried out:

Ward Dawson Bridge and Nearby Culvert

- I. The Ward Dawson Bridge and nearby culvert will be documented in their present historic setting. The documentation packages will include 5"x7" black and white digital prints in accordance with the Interim National Register of Historic Places and National Historic Landmarks Survey Photo Policy Expansion of May 2013.

- II. A brief history of the structures will be included in the aforementioned documentation package, along with fully completed West Virginia Historic Property Inventory (HPI) forms and copies of plan sheets and/or drawings of the bridges from WVDOH bridge files if they are available. The documentation packages will be distributed to WVSHPO: Morgan County Schools; Morgan County Historical and Genealogical Society (MCHGS); Morgan County Public Library; and Paw Paw Public Library.
- III. 150 color brochures about the Ward Dawson Bridge and nearby culvert will be developed by the WVDOH. The WVSHPO will be given the opportunity to review and comment. The brochures will be distributed to the following recipients, each of which was consulted to determine the number of brochure copies that WVDOH will provide: Morgan County Schools (50 brochure copies); MCHGS (25 brochure copies), Morgan County Public Library (50 brochure copies) and Paw Paw Public Library (25 brochure copies). As well, each recipient will receive a CD format digital copy of the brochure for the organization's own reproduction use once the original hard copies provided by WVDOH have been depleted.
- IV. The Ward Dawson Bridge's two bridge plaques will be removed and given to the Morgan County Historical and Genealogical Society per that organization's request.
- V. The Ward Dawson Bridge and nearby culvert will be featured on a future website listing historic bridges.

VI. Duration

This Memorandum of Agreement (MOA) will expire if its stipulations are not carried out within five (5) years from the date of its execution. At such time, and prior to work continuing on the undertaking, the WVDOH shall execute a MOA pursuant to 82 CSR 2.5.4.d. Prior to such time, WVDOH may consult with other signatories to reconsider the terms of the MOA and amend it in accordance. WVDOH shall notify the signatories as to the course of action it will pursue.

VII. Post-Review Discoveries

If any unanticipated discoveries of historic properties or archaeological sites, including human burial sites and/or skeletal remains, are encountered during the implementation of this undertaking, work shall be suspended in the area of the discovery until the WVDOH has developed and implemented an appropriate treatment plan in consultation with the WVSHPO pursuant to 800.13 (b).

VIII. Monitoring and Reporting

Each year following the execution of this MOA until it expires or is terminated, WVDOH shall provide all parties to this MOA a summary report detailing work carried out pursuant to its terms. Such report shall include any scheduling changes proposed,

any problems encountered, and any disputes and objections received in WVDOH's efforts to carry out the terms of this MOA.

IX. Amendments

This MOA may be amended when such an amendment is agreed to in writing by all signatories. The amendment will be effective on the date a copy signed by all of the signatories is filed with the SHPO.

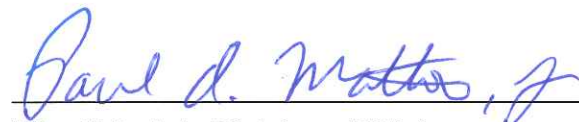
X. Termination

If any signatory to this MOA determines that its terms will not or cannot be carried out, that party shall immediately consult with the other parties to attempt to develop an amendment per Stipulation VIII, above. If within thirty (30) days (or another time period agreed to by all signatories) an amendment cannot be reached, any signatory may terminate the MOA upon written notification to the other signatories. Once the MOA is terminated, and prior to work continuing on the undertaking, WVDOH must execute a MOA pursuant to 82 CSR 2.5.4.d.


XI. Dispute Resolution

Should the WVSHPO object to any actions proposed pursuant to this agreement within thirty (30) days of such action, the WVDOH will consult with the WVSHPO to resolve the objection. If the WVDOH determines that the objection cannot be resolved, the WVDOH will request the further comments of the WVSHPO. Any WVSHPO comment provided in response to such a request will be taken into account by the WVDOH with reference only to the subject of the dispute; the WVDOH's responsibility to carry out all actions under this agreement that are not the subjects of the dispute will remain unchanged.

EXECUTION of the Memorandum of Agreement by the WVSHPO and the WVDOH and implementation of its terms, evidence that the WVDOH has afforded the WVSHPO an opportunity to comment on the Ward Dawson Bridge Replacement Project and its effects on historic properties, and that the WVDOH has taken into account the effects of the undertaking on the historic properties.



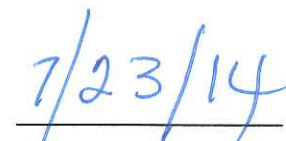
West Virginia Division of Highways



Date



West Virginia Deputy State Historic Preservation Officer



Date